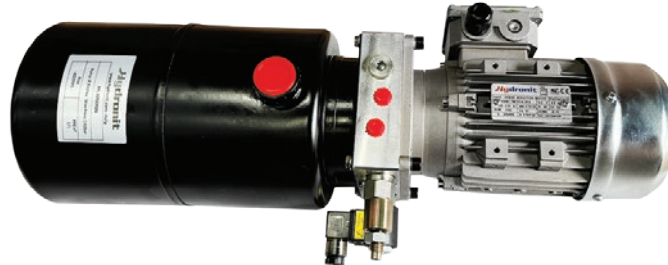


PPL Dock Leveller Hydraulic Power Pack



TIMALCO HYDRAULICS

www.timalco.com.au

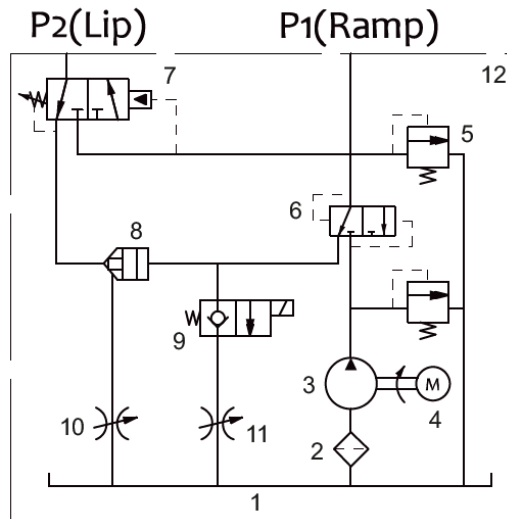


This unit is specifically designed for dock leveller applications, with full hydraulic control.

The P1 line must be connected to the main platform cylinder, A line (and B if double acting) must be connected to the lip cylinder.

When the motor starts, the oil moves the main platform, when the pressure in the circuit reaches the settled value, the sequence valve 7 changes the position and the lip opens. When the motor stops, the main platform cylinder (in first place) then lip cylinder retract automatically.

The optional 2-way NC solenoid valve in cavity 9 is required to lock the dock-leveller in position in case of emergency (electric black-out) or if it is required to control the lifting down with a button or joy-stick.



1	Tank	Capacity: 5L
2	Suction Filter	
3	Pump	2.7cc
4	AC Motor	0.75Kw 380 VAC
5	Relief Valve	Preset at 130 Bar
6	Shuttle Valve	
7	Sequence Valve	Preset at 80 Bar
8	Logical Valve	
9	Solenoid Valve	Two-way single locking valve
10	Flow Control Valve	Adjustable for Lip
11	Flow Control Valve	Adjustable for main platform
12	Central Manifold	



Adl: 08 8262 4333
Mel: 03 9738 2040
Syd: 0484 529 912

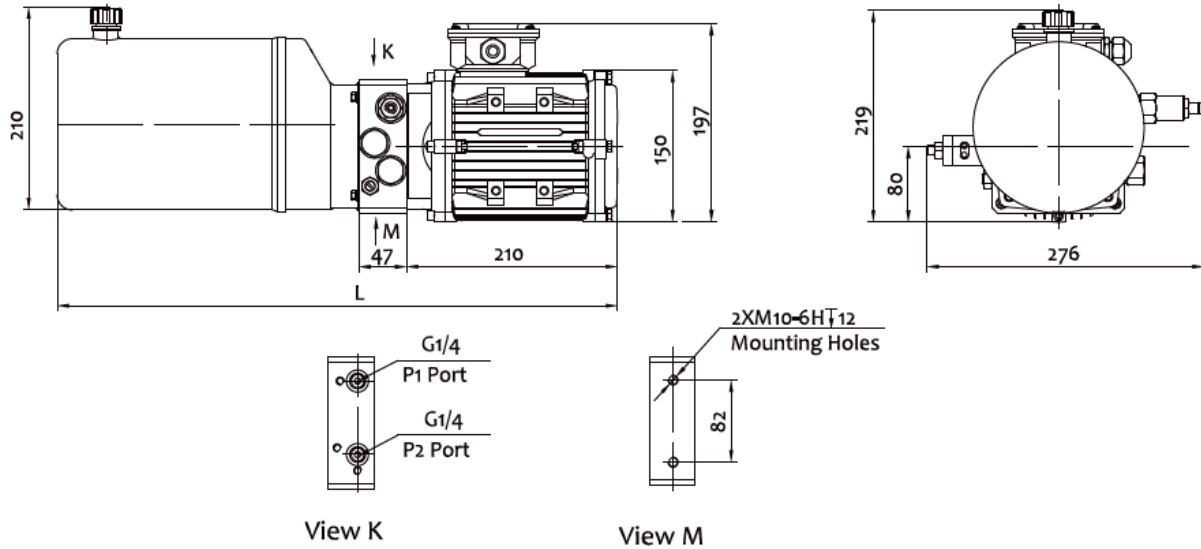


Adl: sales@timalco.com.au
Mel: vicsales@timalco.com.au
Syd: nswsales@timalco.com.au



TIMALCO HYDRAULICS

www.timalco.com.au



Part Number	Motor Voltage	Motor Power	Motor Speed	Pump	Max System Pressure	Tank Capacity
PPL-07527524	380 VAC	0.75Kw	1450 rpm	2.7cc	140 Bar	5L

Installation & Commissioning	
Install Location	Whatever you do, pay attention to the correct position of the suction filter
Room Temperature	-15 ÷ 50°C
Hydraulic Fluid	Fluid for Hydraulic use N46 Viscosity 15 ÷ 68 mm²/s
Fluid Temperature	-10° ÷ + 70°C
Able Contamination	Must be higher than the class 18/14 ISO 4406
Instructions for first start	<ul style="list-style-type: none"> - After connecting the electric motor and the suction tube, check the direction of rotation of the pump with small goodwill of 1 ÷ 2 sec. For standard pumps the direction of motor rotation must be clockwise as viewed from the side of the fan motor. - Flush the oil at atmospheric pressure so as to remove any impurities and air bubbles from the circuit. - Connect all devices to the system and very gradually bring the circuit under pressure. - Check the oil level and, if necessary, fill up to the maximum level. - To ensure a correct and lasting operation, check the oil and replace it after the first 100h and every 3000h of work and/or at most every year.
Torques recommended	M5: 4÷5,5 Nm, M6: 8÷10 Nm, M8: 16÷20 Nm, M8 x pumps: 21÷25 Nm, M10: 30÷40 Nm, valves and plugs 1/4"G: 6÷20 Nm, valves and plugs 3/4-16 UNF: 15÷40 Nm, Relief valve M20x1,5: 50 Nm, tank's plugs 1/2"BSPP: max 10Nm.

Please note: the power unit must be installed by qualified personell only, with respect of common safe rules and practices.