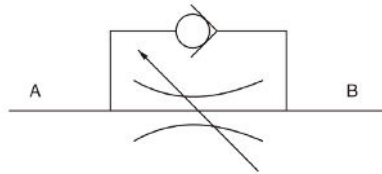


LAG Flow Control Valves with Reverse Free Flow



TIMALCO HYDRAULICS

www.timalco.com.au

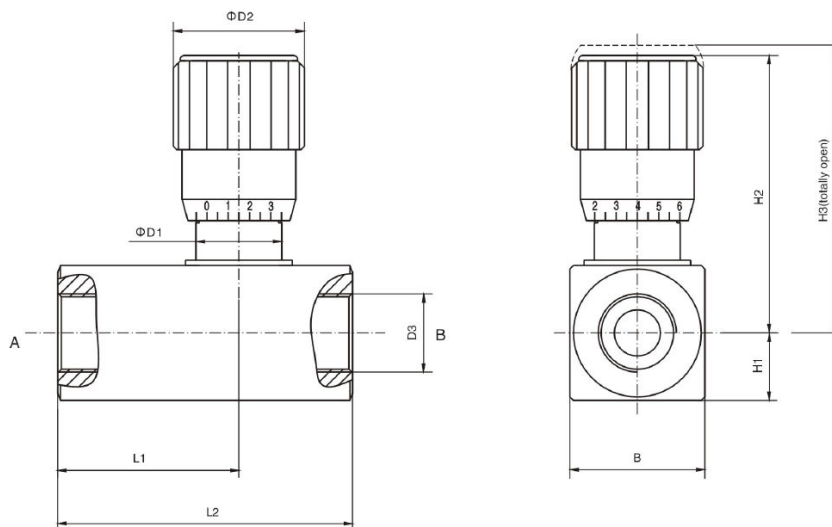


Flow Control with Reverse Free Flow

Part Number	Max Flow	Max Pressure	Ports
LAG-8	15 LPM	315 Bar	1/4" BSPP
LAG-10	30 LPM		3/8" BSPP
LAG-12	45 LPM		1/2" BSPP
LAG-16	60 LPM		3/4" BSPP

Specifications

Hydraulic Fluid	Mineral oil; phosphate - ester
Fluid Temp (°C)	-20~70
Viscosity (mm ² /s)	2.8~380
Opening Pressure (MPa)	a: 0.05 b: 0.4



Part Number	B	D1	D2	D3			H1	H2	H3	L1	L2
G-8	28	19.3	30	M14X1.5	G1/8"	NPT1/8"	14	61.3	67.9	39	64
G-10	28	19.3	30	M18X1.5	G3/8"	NPT3/8"	14	61.5	67.5	43	70
G-12	38	24.2	37	M22X1.5	G1/2"	NPT1/2"	19	78.1	86.5	52	83
G-16	38	24.2	37	M27X2	G3/4"	NPT3/4"	19	78.3	86.5	55.5	89