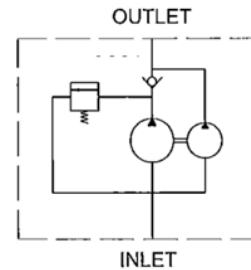
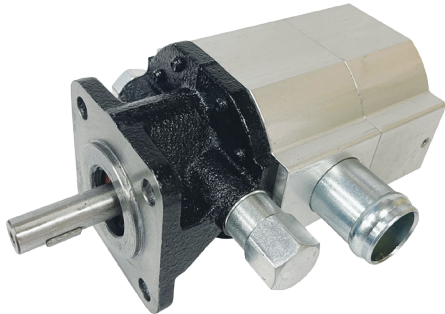


Log Splitter Pump KBNA



TIMALCO HYDRAULICS

www.timalco.com.au



Part Number	Horsepower	Displacement		Max Pressure	Unloading Pressure Range	Speed	Rotating Direction
		Front	Rear				
KBNA-8.8/3.6	5 HP	8.8cc	3.6cc	210 Bar	27-60 Bar	3600 rpm	CW
KBNA-13/4.2	10 HP	13cc	4.2cc				

Features:

- High Working Pressure
- High Efficiency
- Low Pulsation
- Long Life

Dimensions

