

Lever Operated Priority Flow Valves FC, FCR



TIMALCO
HYDRAULICS

www.timalco.com.au

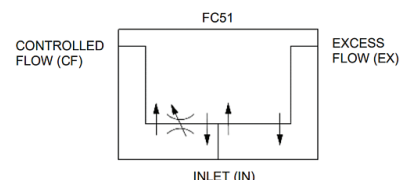
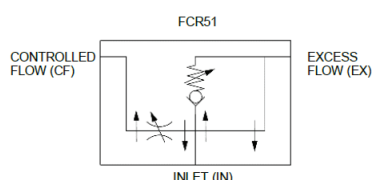
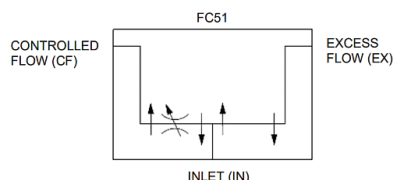
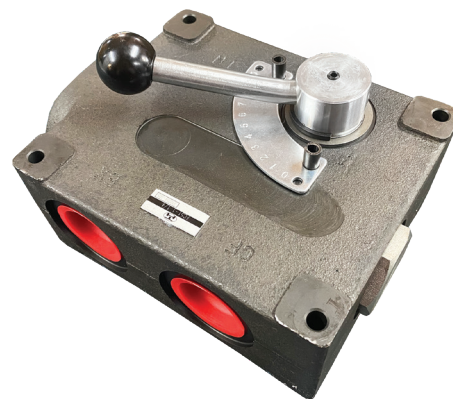
FC51



FCR51



FC51 1 1/4"
300LPM



Lever Operated Priority Flow Valves
BSPP Ports
With or Without Relief

Part Number	Ports	Max Flow P	CF Flow Priority	Relief	Max Pressure
FC51-12	1/2" BSPP	60 LPM	0-60 LPM	No Relief	207 Bar
FC51-34	3/4" BSPP	100 LPM	0-100 LPM	No Relief	207 Bar
FCR51-12	1/2" BSPP	60 LPM	0-60 LPM	With Relief	207 Bar
FCR51-34	3/4" BSPP	100 LPM	0-100 LPM	With Relief	207 Bar

300 LPM Lever Operated Priority Flow Valve
BSPP Ports Without Relief

Part Number	Ports	Max Flow P	CF Flow Priority	Relief	Max Pressure
FC51-11/4	1 1/4" BSPP	300 LPM	0-180 LPM	No Relief	207 Bar

The FC51 pressure compensated adjustable flow control valves are easily adjustable by rotating the handle. The flow out of the 'CF' or controlled flow port can be varied within the range. Any remaining flow is bypassed to the 'EF' or excess flow port. This flow can be used to power another circuit, or can be returned to tank.

The FCR51 model has a built-in adjustable pressure relief. The excess flow port **MUST** be connected to tank.

- 3000 PSI Max
- 180°F Max Temp
- Filtration 17/14/19
- For use with mineral based Hydraulic Fluid
- Side port configuration
- Tested before dispatch
- External seals on rotary spool prevent contamination from locking up spool



sales@timalco.com.au
vicsales@timalco.com.au



08 8262 4333
03 9738 2040



TIMALCO
HYDRAULICS

www.timalco.com.au

Dimensions

