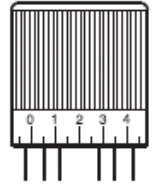
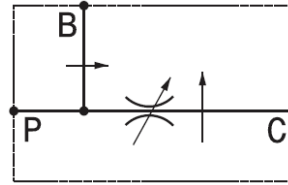


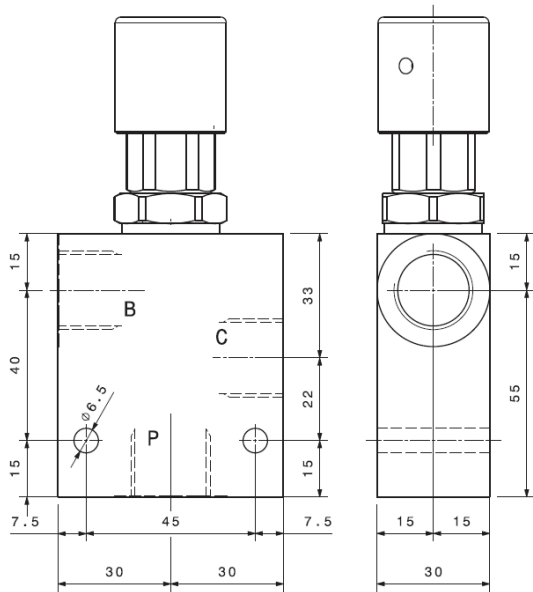
# Inline Priority Flow Valves RFP5012B



[www.timalco.com.au](http://www.timalco.com.au)



Part Number	C B P	Max Flow P	Max Flow C Priority	Max Pressure	Material
RFP5012B	1/2" BSPP	40 LPM	25 LPM	250 Bar	Aluminium Body

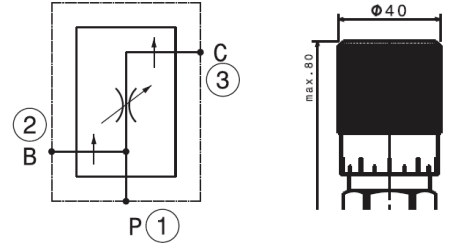


Technical Specifications	
Recommended Viscosity	10 ÷ 420 cSt
Working Temperature	-20 ÷ +90 °C
Absolute filtration	25µ

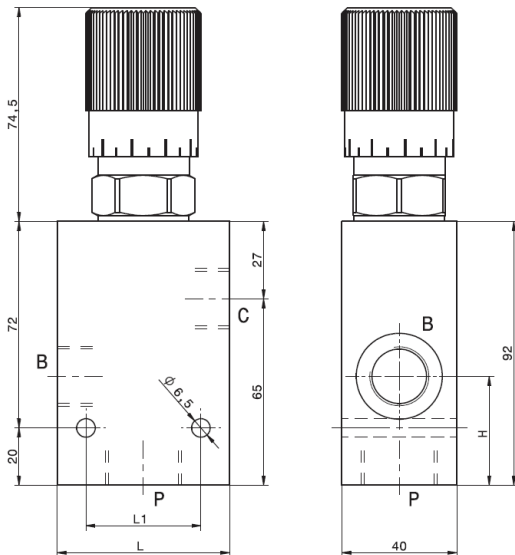
# Inline Priority Flow Valves RFP9034B



www.timalco.com.au



Part Number	C B P	Max Flow P	Max Flow C Priority	Max Pressure	Material
RFP9034B	3/4" BSPP	90 LPM	50 LPM	250 Bar	Aluminium Body



Technical Specifications	
Recommended Viscosity	10 ÷ 420 cSt
Working Temperature	-20 ÷ +90 °C
Absolute filtration	25µ

Dimensions		
L	L1	H
70	45	40

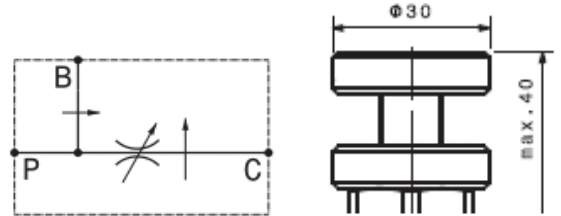
# Inline Priority Flow Valves

## Steel

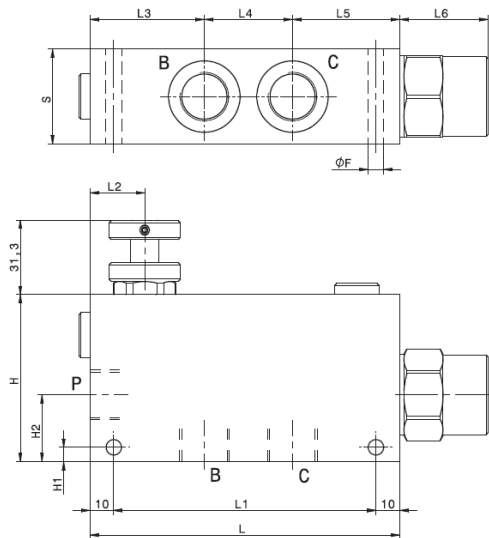
### RFPA



[www.timalco.com.au](http://www.timalco.com.au)



Part Number	P C B	Max Flow P	Max Flow C Priority	Max Pressure	Material
RFPA38A	3/8" BSPP	60 LPM	35 LPM	250 Bar	Steel
RFPA12A	1/2" BSPP	90 LPM	55 LPM	250 Bar	Steel



Technical Specifications	
Recommended Viscosity	10 ÷ 420 cSt
Working Temperature	-20 ÷ +90 °C
Absolute filtration	25µ

### Dimensions

Part Number	L	L1	L2	L3	L4	L5	L6	H	H1	H2	F	S
RFPA38	130	110	23	48	37	45	38	70	6	28	6.5	40
RFPA12	130	110	23	48	37	45	38	70	6	28	6.5	40