

# Unloading Valve Assembly



www.timalco.com.au

## LSV6-16-2NOSP-2H-8G

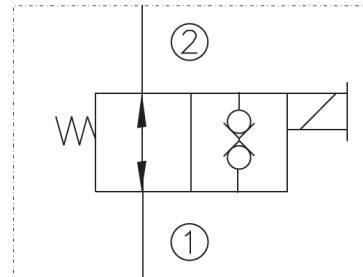
### 24V Normally Open Cartridge Valve Assembly with 1" BSPP Ports

- Bi-directional free flow, checked 1 & 2 when energized
- Flow Rate: 150 LPM
- Pressure: 350 Bar



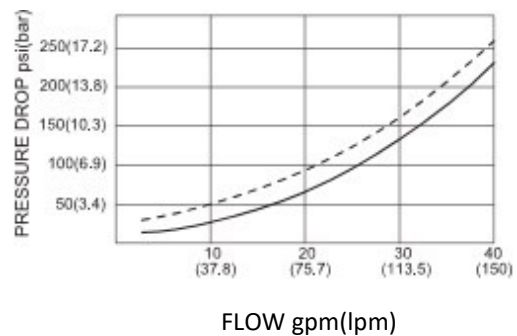
#### Individual Assembly Parts

Part Number	
<b>LSV6-16-2NOSP</b> Solenoid operated 2-way, 2-position, normally open, poppet-type bi-directional cartridge valve.	
<b>LB16-2-S-8G</b> 1" BSPP Steel Body	
<b>LC3-10-C-2H</b> 24V DC Coil	
<b>18209-10-50V</b> Din Plug Connector	



#### Pressure Drop vs Flow

2 to 1- (De-energised)  
1 to 2- (De-energised)  
32cSt oil @ 40°C



08 8262 4333



Timalco Hydraulics



timalcohyd