

# LPRSV2-10

## Pilot Operated Relief Valve



# TIMALCO

## HYDRAULICS

[www.timalco.com.au](http://www.timalco.com.au)



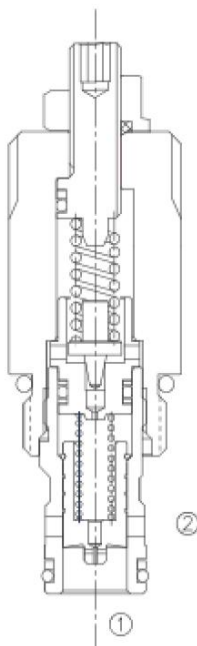
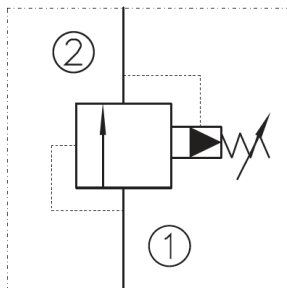
### Features

- Fast response to pressure surges.
- Hardened parts for long life.
- Adjustment may be locked in place.
- Industry common cavity.
- Compact size.

### Specifications

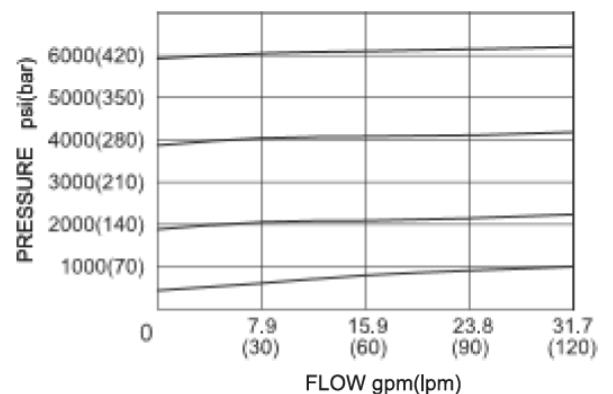
- Max pressure: 420 Bar
- Spring Ranges:
  - 0.5 to 55 Bar – Preset: 47 Bar
  - 35 to 1140 Bar – Preset: 48 Bar
  - 70 to 280 Bar – Preset: 88 Bar
  - 140 to 420 Bar – Preset: 140 Bar
- Temperature: -30°C → 120°C
- Recommended Filtration: ISO 19/15
- Fluids: Mineral Based
- Body Material: Steel rated at 420 Bar.

### Symbol



### Pressure Drop VS. Flow

150 ssu/32cSt OIL @100°F./38°C.



08 8262 4333

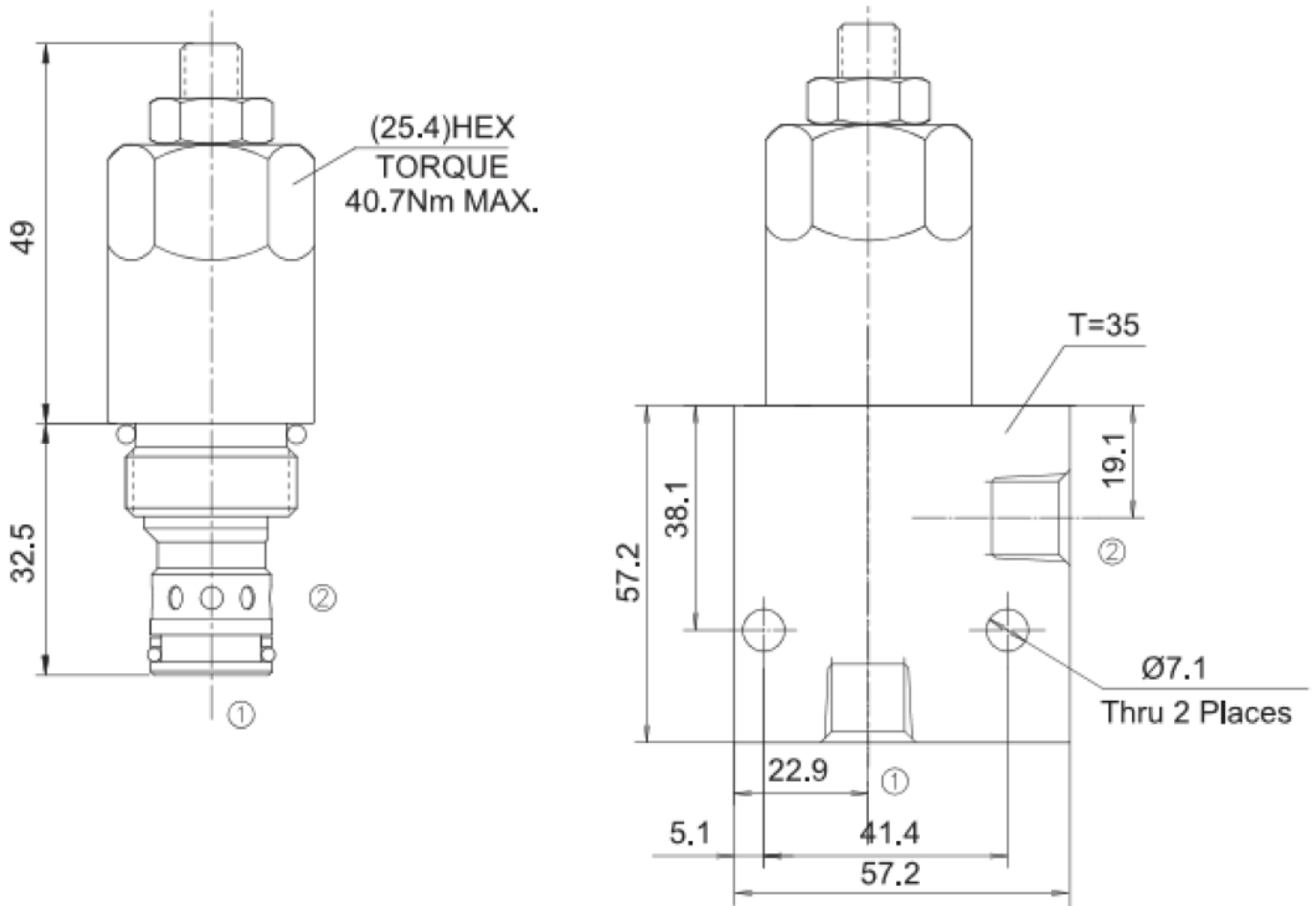


Timalco Hydraulics

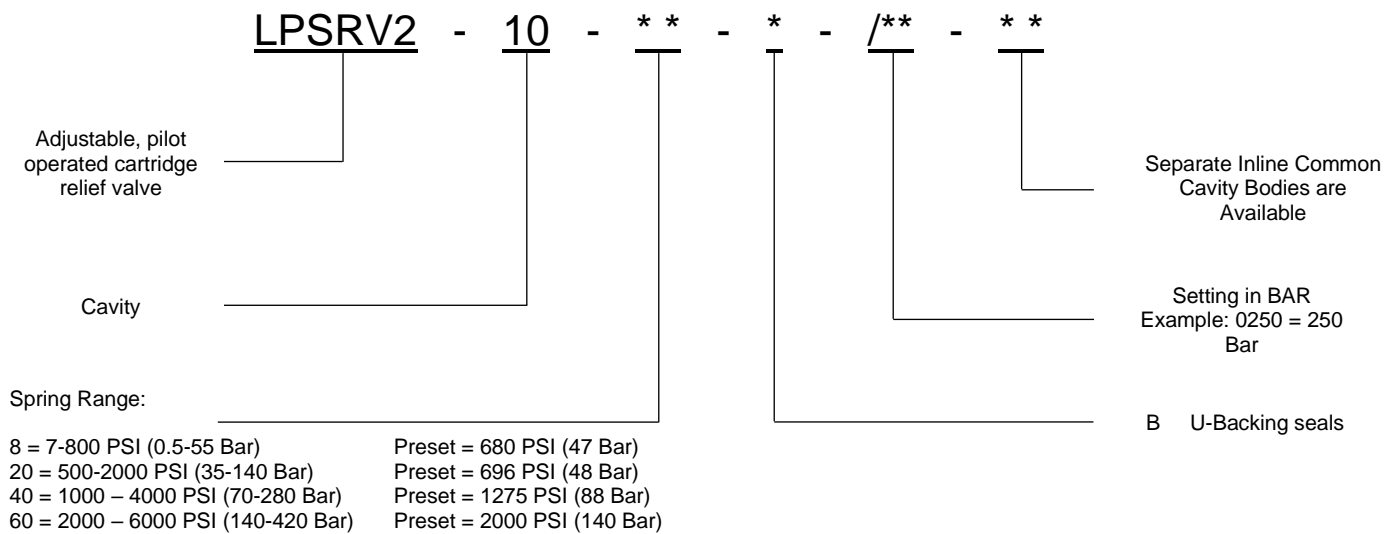


timalcohyd

# Installation Dimensions



# Order Code



08 8262 4333



Timalco Hydraulics



timalcohyd