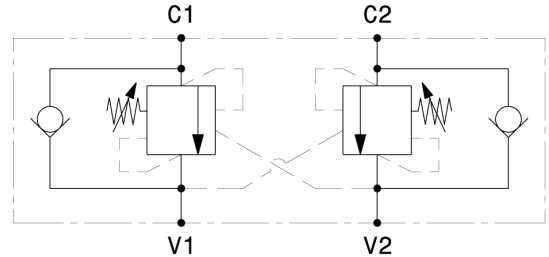
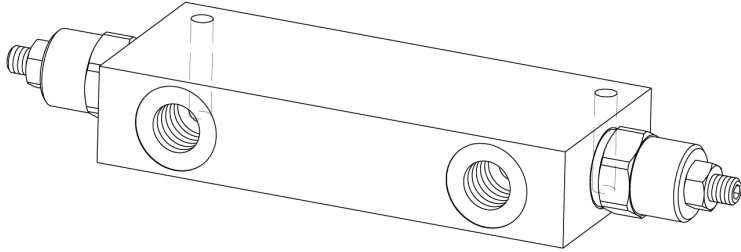


Valvola OVERCENTER doppio effetto in linea
In line, double effect COUNTERBALANCE valve
 mod. OVC-DE-L



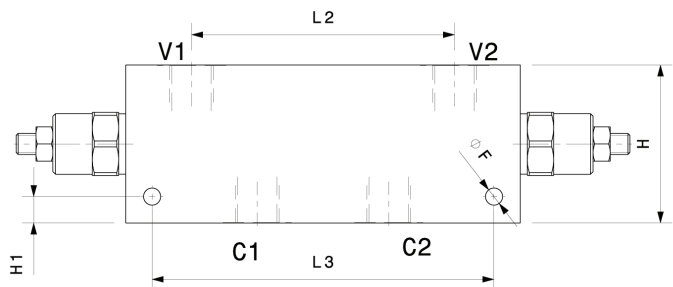
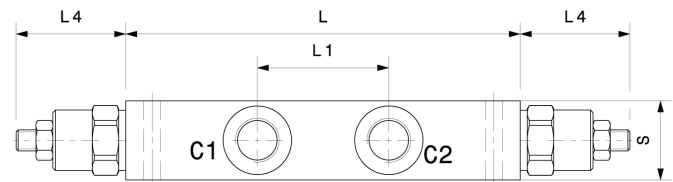
Versione con corpo in alluminio o in acciaio
Aluminium or steel body version

Pressione massima <i>Max pressure</i>	350 bar <i>5000 psi</i>
Rapporto di pilotaggio standard <i>Standard pilot ratio</i>	4,25:1
Rapporto di pilotaggio a richiesta <i>Pilot ratio upon request</i>	3:1 8:1 10:1

Dati e tarature ottenuti usando olio con viscosità 30 cSt a 50°C
Performances and calibrations are carried out by using hydraulic oil with 30 cSt viscosity at 50°C

Viscosità consigliate <i>Recommended viscosity</i>	10 ÷ 420 cSt
Temperature di lavoro <i>Working temperature</i>	-20 ÷ +90 °C
Filtrazione assoluta <i>Absolute filtration</i>	25 µ

Modello <i>Type</i>	V1, V2 C1, C2	Portata max <i>Max. flow</i>
OVC-DE-L-38	3/8" GAS	40 l/min 10.5 gpm
OVC-DE-L-12	1/2" GAS	60 l/min 16 gpm
OVC-DE-L-34	3/4" GAS	100 l/min 26 gpm
OVC-DE-L-10	1" GAS	120 l/min 32 gpm

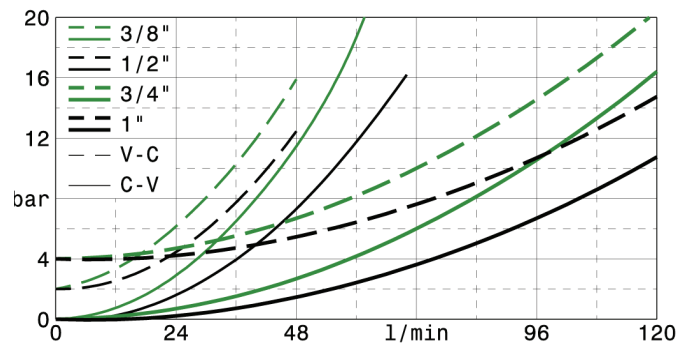
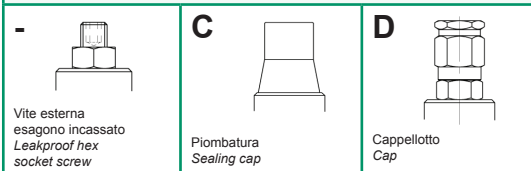


Modello <i>Type</i>	L	H	S	L1	L2	L3	L4	H1	F
OVC-DE-L-38	150	60	30	50	100	130	42	10	6.5
OVC-DE-L-12	150	60	30	50	100	130	42	10	6.5
OVC-DE-L-34	190	70	40	64	138	170	46	10	8.5
OVC-DE-L-10	190	70	50	64	132	170	46	10	8.5

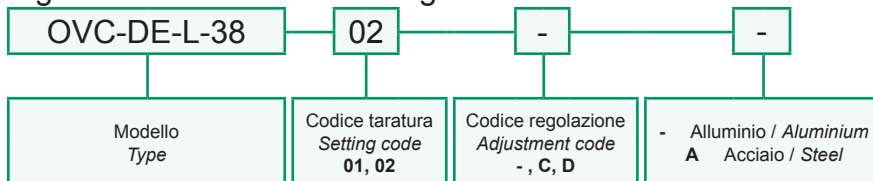
Taratura
Setting
 La valvola deve essere tarata almeno 1.3 volte la massima pressione indotta dal carico
The valve must be set at least 1.3 times maximum load induced pressure

Codice <i>Code</i>	Taratura standard <i>Standard setting (Q=5 l/min)</i>	Campo di taratura <i>Adj. Pressure range</i>	Colore molla <i>Spring color</i>
01	100 bar <i>1450 psi</i>	20÷200 bar <i>290÷2900 psi</i>	Bianco <i>White</i>
02	280 bar <i>4000 psi</i>	50÷350 bar <i>725÷5000 psi</i>	Nero <i>Black</i>

Regolazioni - *Adjustments*



Sigla di ordinazione / *Ordering code*



I dati non sono impegnativi, CBF si riserva di apportare modifiche senza preavviso.
The specifications are not binding, CBF reserves the right to introduce modifications without notice.