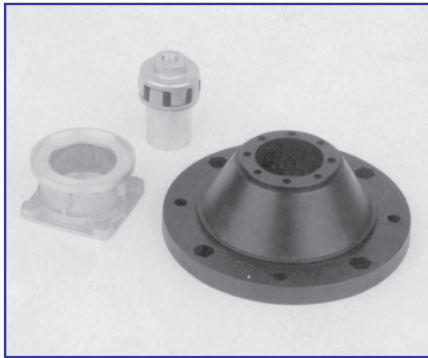
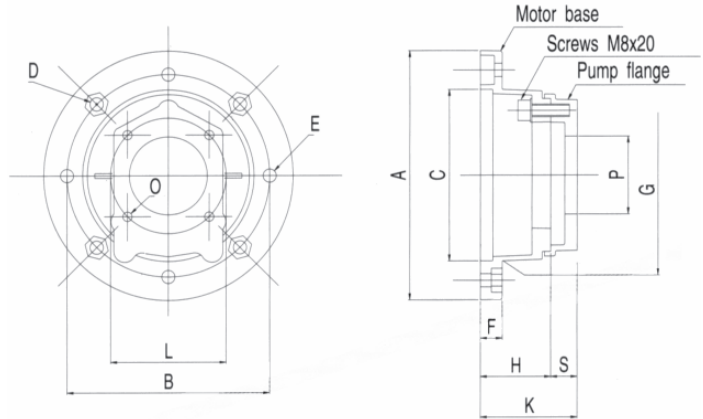


BHP



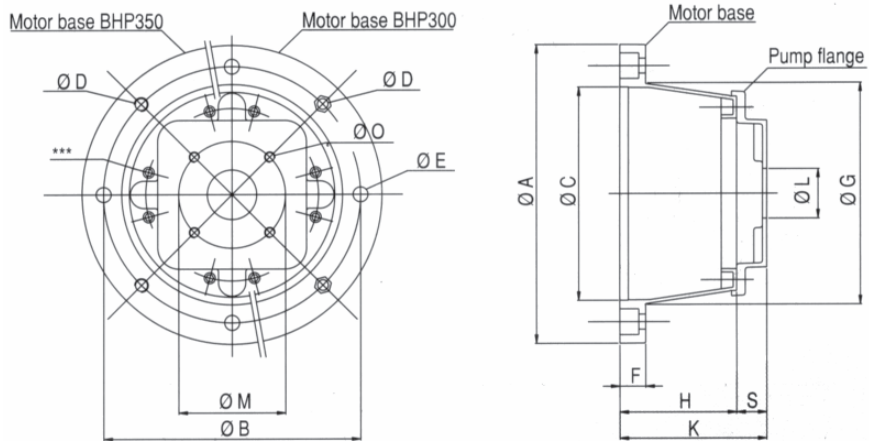
FOR ISO/FLANGED PUMPS

Significant noise reduction compared with all metal bell-housings.
 No separate damping flange required.
 Complete electrical insulation electric motor/pump.
 High impact resistance 100% recyclable
 Reduced stock inventory.



EL. MOTOR B5 - 4 POLES		MODULAR BELL-HOUSING														ELASTIC COUPLING																						
TYPE	KW	PUMP	MOTOR BASE	PUMP FLANGE	A	B	C	D	E	F	G	H	L	deep L	O	n. O	P	S	K	MOTOR HALF	SPIDER	PUMP HALF																
71	0.25 0.37	063B	BHP160	F10B/063B	160	130	110	8.5	8.5	14	110	53	100	M8	2	63	25	78	HC3140	ER300	HC3***-A022																	
		080A		F10B/080A									100	M10	2	80																						
		080B		F10B/080B									110	M10	2	80																						
		080E		F10B/080E									100	M8	4	80																						
		082A		F10B/082A									106.4	M10	2	82.55																						
80	0.55 0.75	063B	BHP200	F10B/063B	200	165	130	11	11	16	130	73	100	M8	2	63	25	98	HC3190	ER300	HC3***-A022																	
		080A		F10B/080A									100	M10	2	80																						
		080B		F10B/080B									110	M10	2	80																						
		080E		F10B/080E									100	M8	4	80																						
		082A		F10B/082A									106.4	M10	2	82.55																						
		080A		F10E/080A									100	M10	2	80																						
		080B		F10E/080B									110	M10	2	80																						
		080E		F10E/080E									100	M8	4	80																						
		082A		F10E/082A									106.4	M10	2	82.55																						
		90		1.1 1.5									063B	BHP200	F10B/063B	200					165	130	11	11	16	130	73	100	M8	2	63	25	98	HC3240	ER300	HC3***-A022		
080A	F10B/080A		100		M10	2	80																															
080B	F10B/080B		110		M10	2	80																															
080E	F10B/080E		100		M8	4	80																															
082A	F10B/082A		106.4		M10	2	82.55																															
080A	F10E/080A		100		M10	2	80																															
080B	F10E/080B		110		M10	2	80																															
080E	F10E/080E		100		M8	4	80																															
082A	F10E/082A		106.4		M10	2	82.55																															
100 112	2.2 3 4	063B	BHP250	F10B/063B	250	215	180	13.5	13.5	20	180	85	100	M8	2	63	25	110	HC3280	ER300	HC3***-A022																	
		080A		F10B/080A									100	M10	2	80																						
		080B		F10B/080B									110	M10	2	80																						
		080E		F10B/080E									100	M8	4	80																						
		082A		F10B/082A									106.4	M10	2	82.55																						
		080A		F10E/080A									100	M10	2	80																						
		080B		F10E/080B									110	M10	2	80																						
		080E		F10E/080E									100	M8	4	80																						
		082A		F10E/082A									106.4	M10	2	82.55																						

*** Machining code see [pag 31](#)



EL. MOTOR B5 - 4 POLES		MODULAR BELL-HOUSING														ELASTIC COUPLING**		
TYPE	KW	MOTOR BASE	PUMP FLANGE¹	A	B	C	D	E	F	G	H	L min.	M max.	S	K	MOTOR HALF	SPIDER	PUMP HALF
132	5,5	BHP300	F24PA033/****									60	200	33	139	HC5380	ER500	HC5***-A025
	7,5		F24PA046/****	300	265	230	13,5	13,5	20	234	106	80	200	46	152			HC5***-B035
	9		F24PA059/****									80	200	59	165			HC5***-C045
160	11	BHP350	F24PA033/****									60	200	33	169	HC5420	ER500	HC5***-A025
	15		F24PA046/****	350	300	250	M16	17,5	30	260	136	80	200	46	182			HC5***-B035
			F24PA059/****									80	200	59	195			HC5***-C045
180	18,5	BHP350	F24PA033/****									60	200	33	169	HC5480	ER500	HC5***-A025
	22		F24PA046/****	350	300	250	M16	17,5	30	260	136	80	200	46	182			HC5***-B035
			F24PA059/****									80	200	59	195			HC5***-C045

*** Type
 n. 8 screws M8x30
 n. 8 Ø 9 spring washers
 n. 8 M8 nuts

* Refer to pag 29 for pump flange fixation hole codes
 ** Refer to pag. 30 / 31 for elastic coupling machining codes