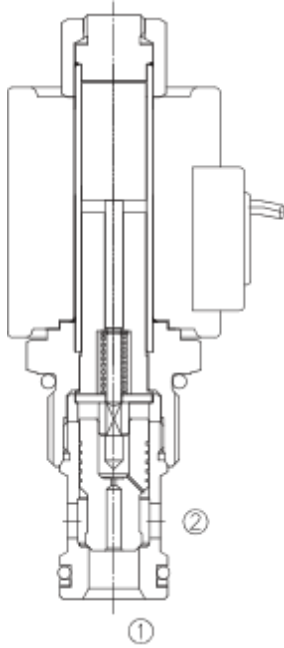


LSV2-12-2 NOP

二位二通电磁阀常开，锥阀型

Normally-Open, Two-Way, Two-Position, Poppet Type Cartridge Solenoid Valve



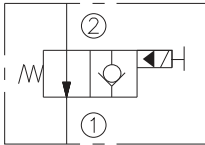
OPERATION

When de-energized, the valve allows flow from ② to ①, flow from ① to ② is severely restricted in this mode. When energized, the valve is poppet closes on its seat, blocking flow in the ② to ① direction. The cartridge will allow ① to ② flow after overcoming the solenoid force.

当电磁铁不通电时，② 到①通，①到②严重节流；
当电磁铁通电时，② 到①不通，当在①口压力克服电磁力，①到②开启。

Operation of Manual Override Option: To override, push button in to activate. To return to normal valve function, release button. 推进按钮，②到①关闭；释放按钮，返回到常态。

SYMBOL



FEATURES

特性

- Continuous-duty solenoid. 可持续工作的电磁铁。
- Hardened poppet and plunger for long life. 长寿命的阀。
- Efficient wet-armature construction. 高效能的电磁铁结构。
- Optional coil voltages and terminations. 可选择的线圈电压和终端
- Filter screen standard. 标准的过滤网。
- Industry common cavity. 工业通用插孔。
- Compact size. 紧凑的结构。

SPECIFICATIONS

技术参数

Max. Operating Pressure (最大工作压力): 250Bar

Flow (流量): See PRESSURE DROP VS. FLOW graph.

Internal Leakage (内泄漏): 3 drops/min. max. at 250Bar.

Temperature(温度): -22°F to +250°F (-30°C to +120°C)

Coil Rating (线圈电压范围): Continuous from 90% o 110% of rated voltage.

Recommended Filtration: Critical Application-ISO 16/12
(推荐的过滤网) Non-Critical Application-ISO 19/15

Fluids (流体): Mineral-based fluids.

For other fluid compatibility consult factory.

Cavity (插孔): 12-2, see page 364

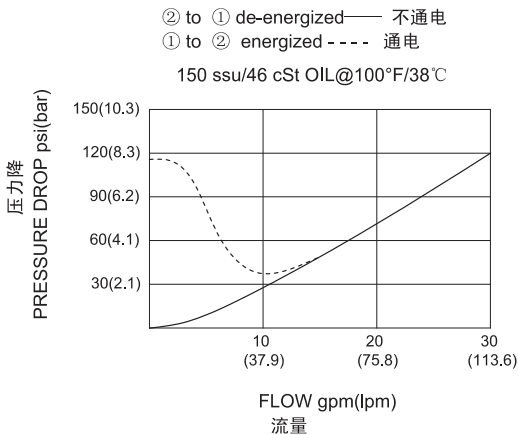
Body Material (阀块材料): Anodized 6061T6 aluminum alloy rated at 207 Bar.

6061-T6铝，允许使用最大压力207Bar.

Steel rated at 350 Bar.

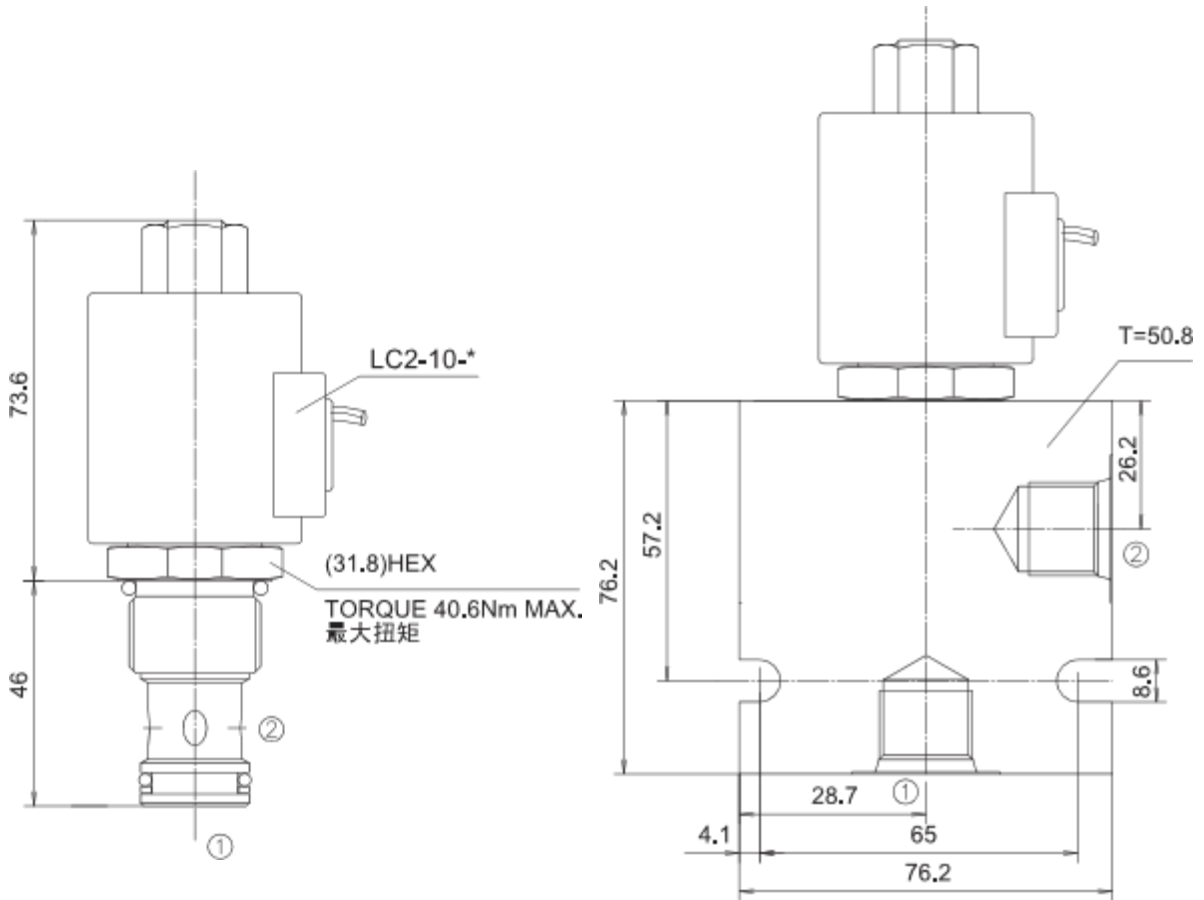
钢材允许使用最大压力350Bar.

PRESSURE DROP VS. FLOW



INSTALLATION DIMENSIONS

COIL MUST BE INSTALLED WITH LETTER UP
安装线圈时, 字母必须朝上



Unit=Millimeters

TO ORDER

LSV2 - 12 - 2 NO P - * - ** - **

