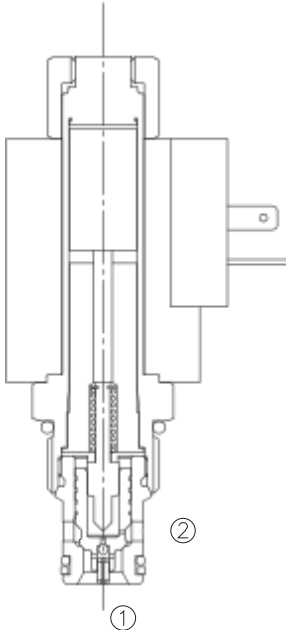


LSV2-10-2 NORP

二位二通电磁阀 常开 锥阀型

Normally-Open, Two-Way, Two-Position, Poppet Type Cartridge Solenoid Valve With Reverse Flow De-energized



OPERATION

When de-energized, the poppet lifts to open flow both ② and ① ;
When energized, the cartridge acts as a check valve, allowing flow from ① to ② after overcoming the solenoid force (requires 3.4 to 10.3 bar [50 to 150 psi]).
while blocking flow from ② to ①.

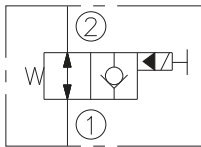
当电磁铁不通电时，从②口到①口双向通；

当电磁铁通电时，②口到①口不通，当①口压力超过电磁铁力，①口到②口方向打开。

Operation of Manual Override Option: To override, push button in to activate. To return to normal valve function, release button.

推进按钮，②到①关闭；释放按钮，返回到常态。

SYMBOL



FEATURES

特性

- Continuous-duty solenoid. 可持续工作的电磁铁。
- Hardened seat for long life . 长寿命的阀。
- Optional coil voltages and terminations. 可选择的线圈电压和终端。
- Efficient wet-armature construction. 高效能的电磁铁结构。
- Filter screen standard. 标准的过滤网。
- Industry common cavity. 工业通用插孔。
- Compact size. 紧凑的结构。

SPECIFICATIONS

技术参数

Max. Operating Pressure (最大工作压力): 250Bar

Flow (流量): See PRESSURE DROP VS. FLOW graph.

Internal Leakage (内泄漏): 3 drops/minute max. at 250Bar .

Temperature(温度): -22°F to +250°F (-30°C to +120°C)

Coil Rating (线圈电压范围): Continuous from 90% to 110% of nominal voltage.

Recommended Filtration: Critical Application-ISO 16/12

(推荐的过滤网) Non-Critical Application-ISO 19/15

Fluids (流体): Mineral-based fluids.

For other fluid compatibility consult factory.

Cavity (插孔): 10-2, See page 363

Body Material (阀块材料): Anodized 6061T6 aluminum

alloy rated at 207 Bar.

6061-T6, 允许使用最大压力207Bar.

Steel rated at 350 Bar.

钢材允许使用最大压力350Bar.

PRESSURE DROP VS. FLOW

② to ① ——— De-energized ;不通电
① to ② - - - - - Energized ;通电

150 ssu/46 cSt OIL@100°F/38°C

