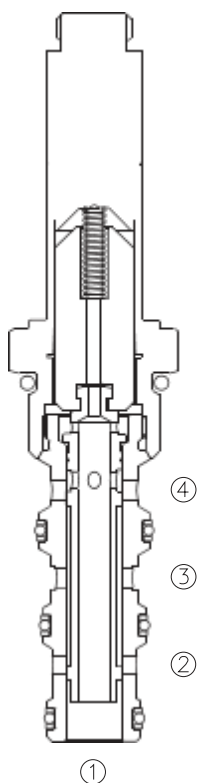


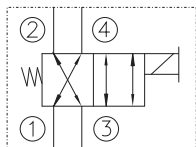
LSV2-10-4 CO

二位四通电磁阀

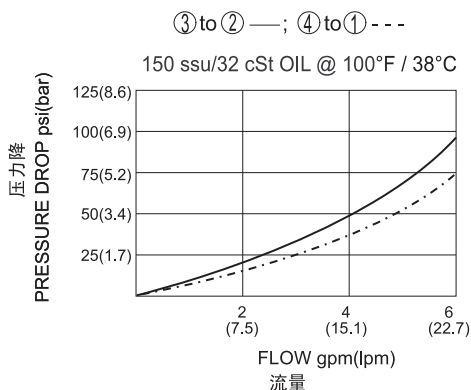
Four-Way, Two-Position, Spool-Type Cartridge Solenoid Valve



SYMBOL



PRESSURE DROP VS. FLOW



OPERATION

When de-energized, the valve allows flow from ③ to ② and from ④ to ①.

When energized, the cartridge's spool shifts and allows flow from ③ to ④ and from ② to ①.

当电磁铁不通电时，③和②通，④与①通；

当电磁铁通电时，③和④通，②与①通。

Operation of Manual Override Option: To override, push button in, twist counterclockwise and release. In this position, valve will remain detented in the shifted condition.

To return to normal operation, push button in, twist clockwise and release. Override will be detented in this position.

先推进按钮，然后逆时针方向旋转，释放。此时阀芯处于另一位置；

返回到常态，推进按钮，然后顺时针方向旋转，释放。旋钮将被固定在这位置。

FEATURES

特性

- Continuous-duty solenoid. 可持续工作的电磁铁。
- Hardened precision spool and sleeve for long life. 长寿命的阀。
- Efficient wet-armature construction. 高效能的电磁铁结构。
- Optional coil voltages and terminations. 可选择的线圈电压和终端。
- Manual override option. 可带手动卸荷。
- Industry common cavity. 工业通用插孔。
- Compact size. 紧凑的结构。

SPECIFICATIONS

技术参数

Operating Pressure (工作压力): 207 Bar

Flow (流量): See PRESSURE DROP VS. FLOW graph.

Internal Leakage (内泄漏): (per land) 82cc/min. max. at 207 Bar

Temperature(温度): -22°F to +250°F (-30°C to +120°C)

Coil Rating (线圈电压范围): Continuous from 90% to 110% of rated voltage.

Recommended Filtration (推荐的过滤网): ISO 16/12

Fluids (流体): Mineral-based fluids.

For other fluid compatibility, consult factory.

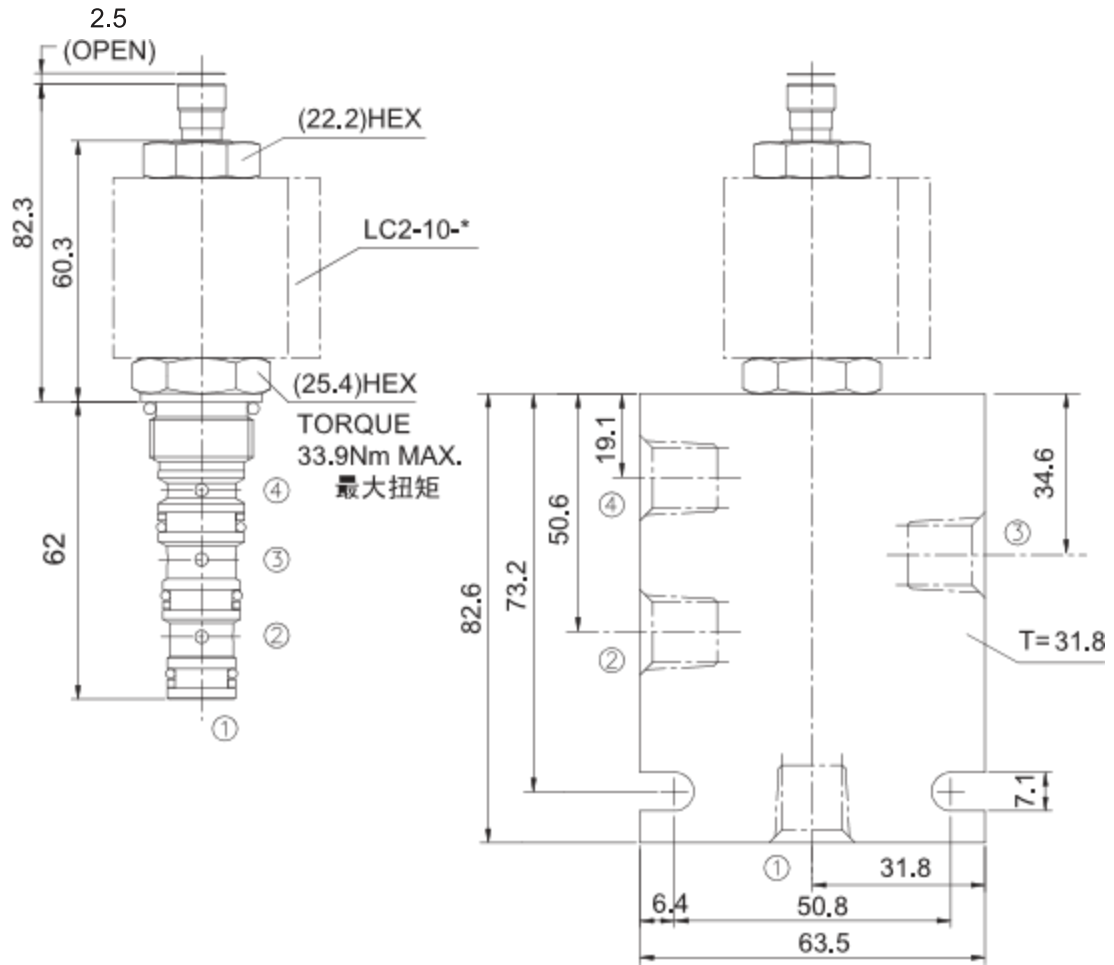
Cavity (插孔): :10-4, see page 363

Body Material (阀块材料): Anodized 6061T6 aluminum alloy rated at 207 Bar.

6061-T6铝，允许使用最大压力207Bar.

INSTALLATION DIMENSIONS

COIL MUST BE INSTALLED WITH LETTER UP
安装线圈时, 字母必须朝上



Unit=Millimeters

TO ORDER

LSV2 - 10 - 4 CO - * - * - * - *

SOLENOID VALVE	电磁阀	_____	_____	_____	_____	_____	_____	_____	_____	_____	_____	_____	_____	_____	_____	_____	_____	_____	_____	_____	
CAVITY	插孔	_____	_____	_____	_____	_____	_____	_____	_____	_____	_____	_____	_____	_____	_____	_____	_____	_____	_____	_____	_____
FLOW PATH	流道类型	_____	_____	_____	_____	_____	_____	_____	_____	_____	_____	_____	_____	_____	_____	_____	_____	_____	_____	_____	_____
CROSSOVER		_____	_____	_____	_____	_____	_____	_____	_____	_____	_____	_____	_____	_____	_____	_____	_____	_____	_____	_____	_____
M=Manual Override	手动卸荷	_____	_____	_____	_____	_____	_____	_____	_____	_____	_____	_____	_____	_____	_____	_____	_____	_____	_____	_____	_____
(Omit for standard)	省略为常规	_____	_____	_____	_____	_____	_____	_____	_____	_____	_____	_____	_____	_____	_____	_____	_____	_____	_____	_____	_____

BODY PORTING 阀块油口
3N=3/8PTF
6T=SAE6
8T=SAE8
Other Porting is Available
其它螺纹油口也是可选择的
(Omit for Cartridge only
省略为不带阀块)

COIL CONNECTION 线圈连接
D= Double Lead 双线
H= Hirschmann 三插
C= Conduit 带嵌套
B= Double Spade 双插
ER= Deutsch Connector (Water-proof Coil)
德意志插座(防水线圈)

VOLTAGE 电压
1=12V Volt DC
2=24V Volt DC
3=110V Volt AC
4=220V Volt AC
5=10V Volt DC