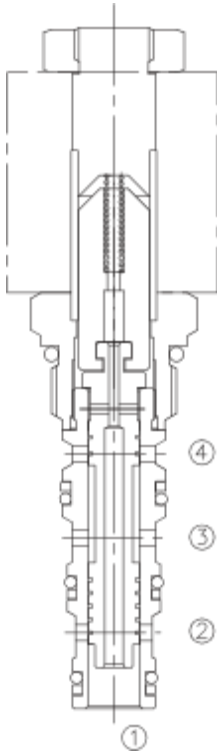


LSV2-08-4 NC 二位四通电磁阀

Four-Way, Two-Position, Spool-Type Cartridge Solenoid Valve



OPERATION

When de-energized, the valve flow paths are blocked.

When energized, the cartridge's spool shifts and allows flow from

③ to ④ and from ② to ①.

当电磁铁不通电时，③和②不通，④与①不通；

当电磁铁通电时，③和④通，②与①通。

Operation of Manual Override Option: To override, push button in, twist counterclockwise and release. In this position, valve will remain open in a detented condition. To return to normal operation, push button in, twist clockwise and release. Override will be detented in this position.

先推进按钮，然后逆时针方向旋转，释放。此时阀口打开；返回到常态，推进按钮，然后顺时针方向旋转，释放。旋钮将被固定在这位置。

FEATURES

特性

- Continuous-duty solenoid. 可持续工作的电磁铁。
- Hardened precision spool and sleeve for long life. 长寿命的阀。
- Efficient wet-armature construction. 高效能的电磁铁结构。
- Optional coil voltages and terminations. 可选择的线圈电压和终端。
- Manual override option. 可带手动卸荷。
- Industry common cavity. 工业通用插孔。
- Compact size. 紧凑的结构。

SPECIFICATIONS

技术参数

Operating Pressure (工作压力): 207 Bar

Flow (流量): See PRESSURE DROP VS. FLOW.

Internal Leakage (内泄漏): (per mind) 82cc /min. max. at 207 Bar

Temperature(温度): -22°F to +250°F (-30°C to +120°C)

Coil Rating (线圈电压范围):

Continuous from 90% to 110% of rated voltage.

Recommended Filtration (推荐的过滤网): ISO 16/12

Fluids (流体): Mineral-based fluids.

For other fluid compatibility, consult factory.

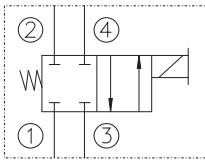
Cavity (插孔): 08-4, see page 362

Body Material (阀块材料): Anodized 6061T6 aluminum

alloy rated at 207 Bar.

6061-T6铝，允许使用最大压力207Bar.

SYMBOL



PRESSURE DROP VS. FLOW

