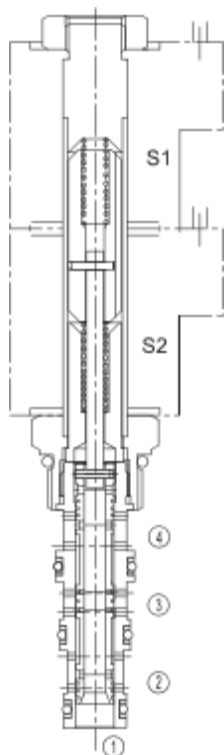


## LSV-08-34-T 三位四通电磁阀

### Four-Way, 3 Position, Tandem Center, Spool-Type Cartridge Solenoid Valve



#### OPERATION

When de-energized, the valve allows flow between the ① and ③ ports with ports ② and ④ blocked. When the lower solenoid is energized, the valve allows flow between the ① and ② ports and the ③ and ④ ports. When the upper solenoid is energized, the valve allows flow between the ① and ④ ports and the ② and ③ ports.

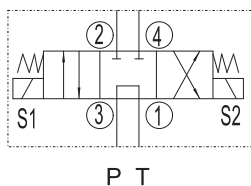
当电磁铁不通电时，①和③通，②与④不通；  
当下方的电磁铁S2通电时，①与②通，③和④通；  
当上方的电磁铁S1通电时，①和④通，②与③通。

#### FEATURES

##### 特性

- Continuous-duty solenoid. 可持续工作的电磁铁。
- Hardened precision spool and sleeve for long life. 长寿命的阀。
- Efficient wet-armature construction. 高效能的电磁铁结构。
- Optional coil voltages and terminations. 可选择的线圈电压和终端。
- Industry common cavity. 工业通用插孔。
- Compact size. 紧凑的结构。

#### SYMBOL



#### SPECIFICATIONS

##### 技术参数

**Operating Pressure (工作压力):** 207 Bar

**Flow (流量):** See PERFORMANCE CHARACTERISTIC graph.

**Internal Leakage (内泄漏):** (per land) 164cc/min. max.

**Temperature (温度):** -22°F to +250°F (-30°C to +120°C)

**Coil Rating (线圈电压范围):**

Continuous from 90% of rated voltage to 110% of rated voltage.

**Recommended Filtration: ISO 16/12**

(推荐的过滤网) Non-Critical Application-ISO 19/15

**Fluids (流体):** Mineral-based fluids.

For other fluid compatibility, consult factory.

**Cavity (插孔):** 08-4, see page 362

**Body Material (阀块材料):** Anodized 6061T6 aluminum

alloy rated at 207 Bar

6061-T6铝，允许使用最大压力207Bar.

#### PERFORMANCE CHARACTERISTIC

