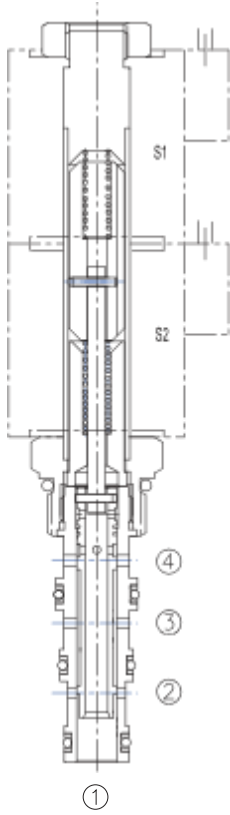


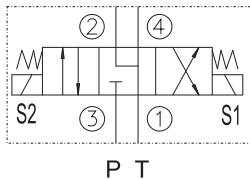
LSV-08-34-M

三位四通电磁阀

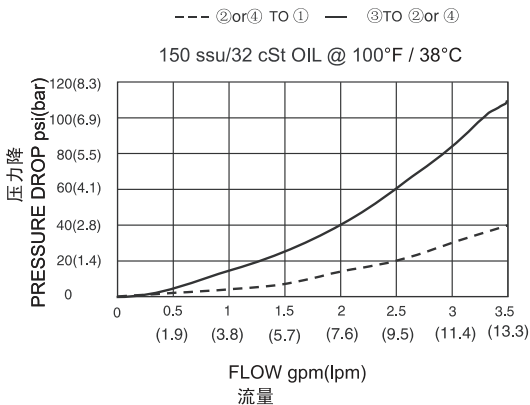
Four-Way, 3 Position, Motor Center, Spool-Type Cartridge Solenoid Valve



SYMBOL



PERFORMANCE CHARACTERISTIC



OPERATION

When de-energized, the valve allows flow between the ①, ②, and ④ ports with the ③ port blocked. When the upper solenoid is energized, the valve allows flow between ① and ② ports and the ③ and ④ ports. When the lower solenoid is energized, the valve allows flow between the ① and ④ ports and the ② and ③ ports.

当电磁铁不通电时，①、②和④通，③口被关闭；
当上方的电磁铁S1通电时，①与②通，③和④通；
当下方的电磁铁S2通电时，①和④通，②与③通。

FEATURES

特性

- Continuous-duty solenoid. 可持续工作的电磁铁。
- Hardened precision spool and sleeve for long life. 长寿命的阀。
- Efficient wet-armature construction. 高效能的电磁铁结构。
- Optional coil voltages and terminations. 可选择的线圈电压和终端。
- Industry common cavity. 工业通用插孔。
- Compact size. 紧凑的结构。

SPECIFICATIONS

技术参数

Operating Pressure (工作压力): 207 Bar

Flow (流量): See PERFORMANCE CHARACTERISTIC graph.

Internal Leakage (内泄漏): (per land) 164cc/min. max.

Temperature(温度): -22°F to +250°F (-30°C to +120°C)

Coil Rating (线圈电压范围):

Continuous from 90% of rated voltage to 110% of rated voltage.

Recommended Filtration: ISO 16/12

(推荐的过滤网) Non-Critical Application-ISO 19/15

Fluids (流体): Mineral-based fluids.

For other fluid compatibility, consult factory.

Cavity (插孔): 08-4, see page 362

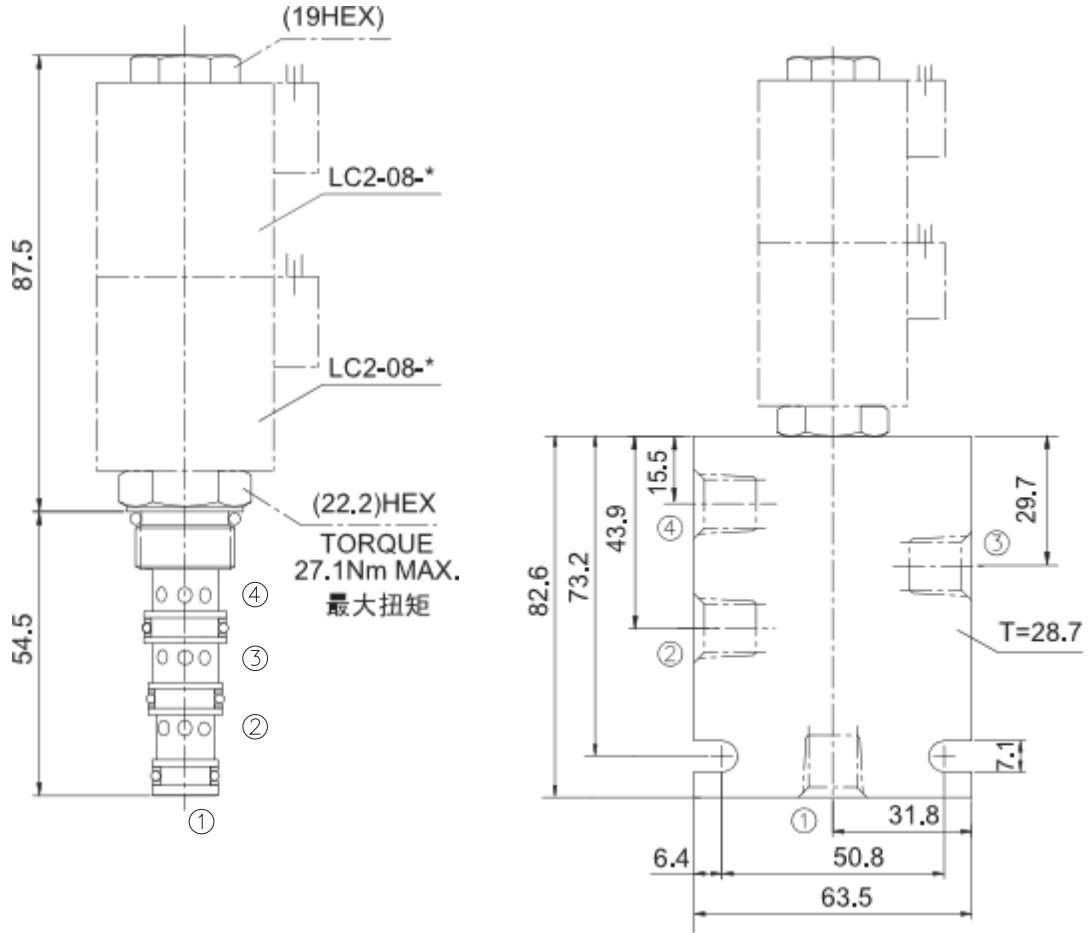
Body Material (阀块材料): Anodized 6061T6 aluminum

alloy rated at 207 Bar

6061-T6铝，允许使用最大压力207Bar.

INSTALLATION DIMENSIONS

COIL MUST BE INSTALLED WITH LETTER UP
安装线圈时, 字母必须朝上



Unit=Millimeters

TO ORDER

LSV - 08 - 34 M - * * - * *

