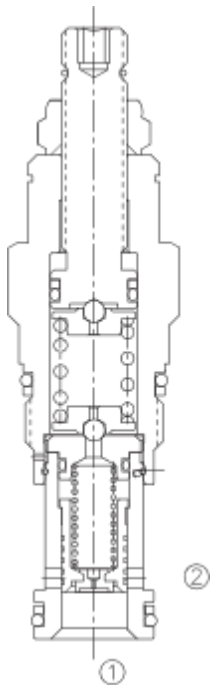
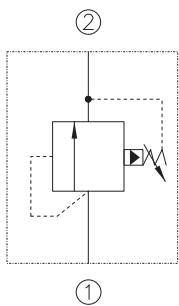


# LRPEE 先导式溢流阀

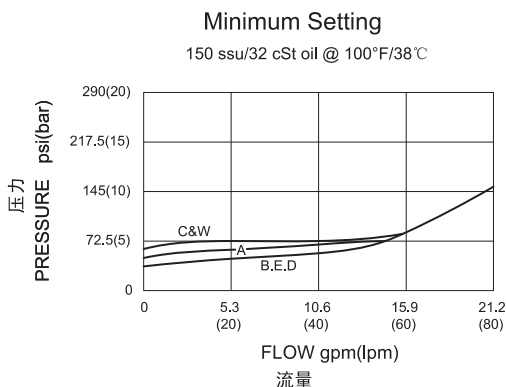
Pilot-Operated, balanced  
piston relief valve



## SYMBOL



## PRESSURE DROP VS. FLOW



## OPERATION

The valve are normally closed, pressure-limiting valves used to protect hydraulics components from pressure transients. Fast opening and closing is gained at the expense of smoothness. When the pressure at the inlet (port ①) reaches the valve setting, the valve starts to open to tank (port ②), throttling flow to limit the pressure rise. These valves have low pressure rise vs. flow and are very fast. 快速响应先导式滑阀型溢流阀用于保护系统的压力瞬时过载，快速成启闭仍能保持系统平稳性。当①口压力超过阀的设定时，①口到②口溢流过载，节流限制系统压力升高，这种阀对压力反应灵敏。

## FEATURES

### 特性

- Fast response to pressure surges. 迅速响应压力变化。
- Suitable for use in cross port relief circuits. If used in cross port relief circuits, consider spool leakage. 适合用于溢流阀对装系统。用在这种系统中，应考虑阀内泄漏。
- Not suitable for use in load holding applications due to spool leakage. 不适合用在保压系统中。
- Back pressure on the tank port (port 2 ) is directly additive to the valve setting at a 1:1 ratio . 2口背压会直接1:1影响到阀的设定。
- Hardened poppet and seat for long life. 长寿命的阀。
- Compact size. 紧凑的结构。

## SPECIFICATIONS

### 技术参数

**Max. Operating Pressure(最大工作压力):** 350 Bar  
**Flow(流量):** See PRESSURE DROP VS.FLOW graph.  
**Internal Leakage(内泄漏):** 30 cc/min. at 70 Bar.  
 Factory Pressure Setting Established at 4gpm(15L/min).  
 工厂的设定是指当溢流阀开启时(流量为15L/min)的压力  
**Response Time - Typical(响应时间):** 2 ms  
**Standard Spring Ranges(弹簧调压范围):**

- |   |                   |               |
|---|-------------------|---------------|
| A | 7 to 210 Bar ,    | Preset=70 Bar |
| B | 3.5 to 105 Bar ,  | Preset=70 Bar |
| C | 10.5 to 420 Bar , | Preset=70 Bar |
| D | 1.7 to 55 Bar ,   | Preset=30 Bar |
| E | 1.7 to 28 Bar ,   | Preset=14 Bar |
| W | 10.5 to 315 Bar , | Preset=70 Bar |

**Temperature(温度):** -22°F to +250°F (-30°C to +120°C)

**Fluids(流体):** Mineral-based fluids.

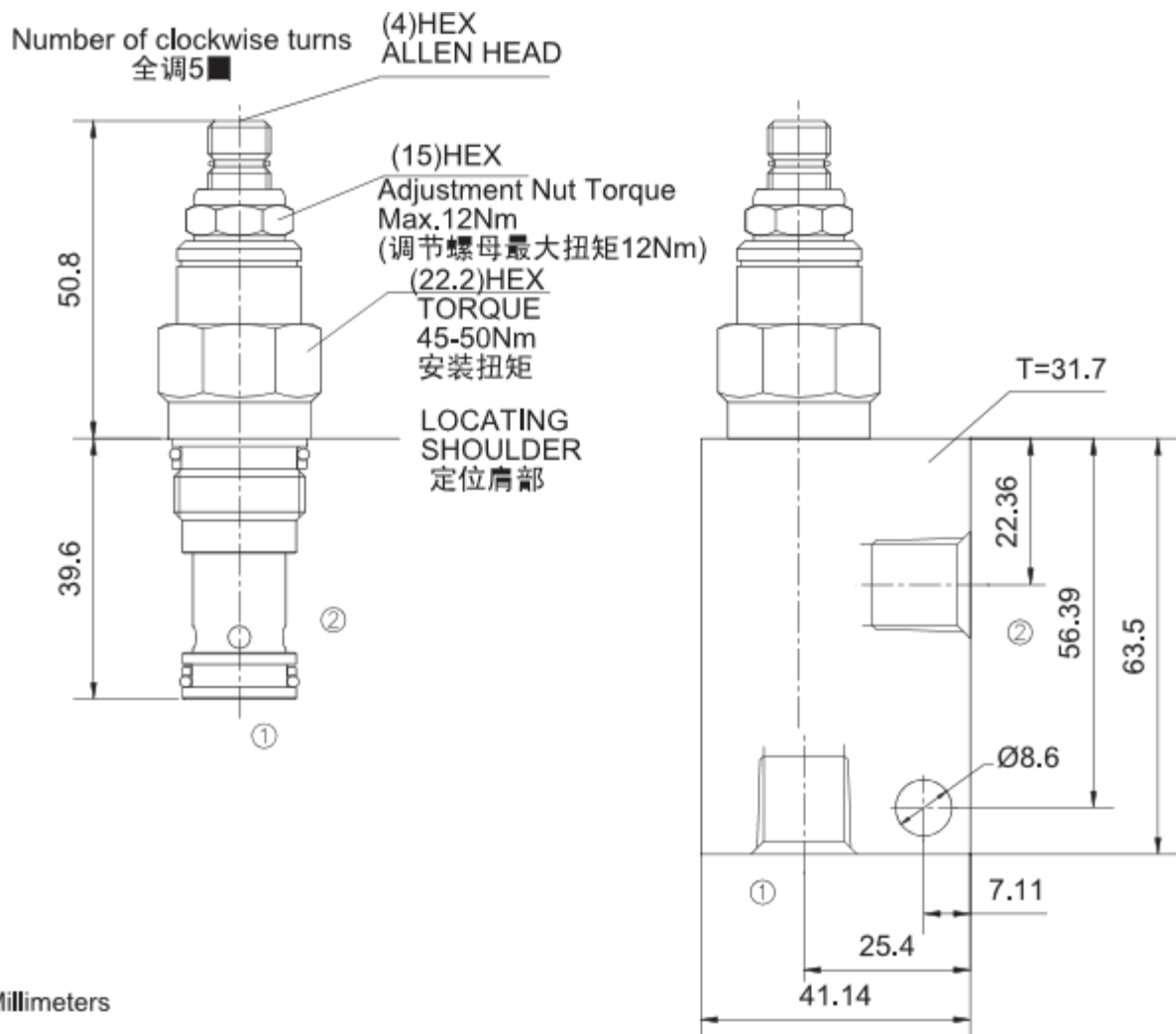
For other fluid compatibility, consult factory.

**Cavity(插孔):** SUN T-10A, see page 368

**Body Material(阀块材料):** steel rated at 350 Bar.

钢材，允许使用最大压力350 Bar。

## INSTALLATION DIMENSIONS



Unit=Millimeters

## TO ORDER

