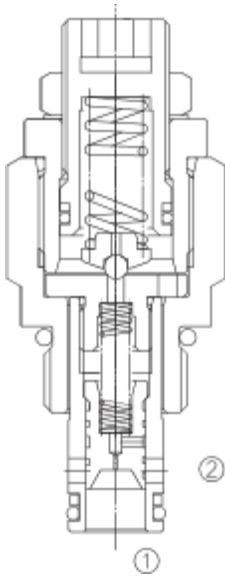


# LPSRV2-08

## 先导式溢流阀

Adjustable, Cartridge Relief Valve, Pilot Operated, Sliding Spool



### OPERATION

The valve prevents flow from ① to ② until pressure at ① exceeds the set crack pressure and opens the pilot section. The pilot flow creates a pressure differential across the spool which causes the valve to open allowing flow from ① or ② protecting the circuit from over pressurization. This cartridge relief valve offers a smooth transition in response to a load change in a hydraulic circuit.

阀体①口和②口不通，直到①口压力超过设定压力且打开先导阀芯。这样，先导阀芯引起主阀芯两端压力差的变化，压力差达到一定时，①口和②口互通。

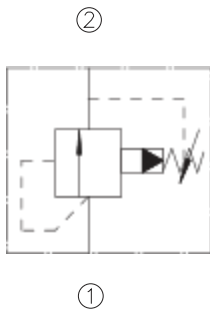
此阀在液压系统中，平滑响应负载变化。

### FEATURES

特性

- Rapid response to pressure surges. 迅速响应压力变化。
- Hardened parts for long life. 长寿命的阀。
- Adjustment may be locked in place. 调节杆可被锁定住。
- Industry common cavity. 工业通用插孔。
- Compact size. 紧凑的结构。

### SYMBOL



### SPECIFICATIONS

技术参数

**Max. Operating Pressure(最大工作压力):** 350 Bar

**Flow(流量):** See PRESSURE DROP VS. FLOW graph.

**Internal Leakage(内泄漏):** 82cc/min.MAX.to 90% of nominal setting pressure.

**Spring Ranges(弹簧调压范围):**

50psi(3.45bar)to 1500psi (103.5bar); Preset(预设):450psi( 31Bar)

50psi(3.45bar) to 3000psi (207bar); Preset(预设): 950psi( 65.5Bar)

50psi(3.45bar) to 5000psi (350bar); Preset(预设): 1500psi(103Bar)

**Temperature(温度):** -22°F to +250°F (-30°C to +120°C)

**Recommended Filtration(推荐的过滤网):** ISO 19/15

**Fluids(流体):** Mineral-based fluids.

For other fluid compatibility consult factory.

**Cavity(插孔):** 08-2, see page 362

**Body Material(阀块材料):** Anodized 6061T6 aluminum

alloy rated at 207 Bar.

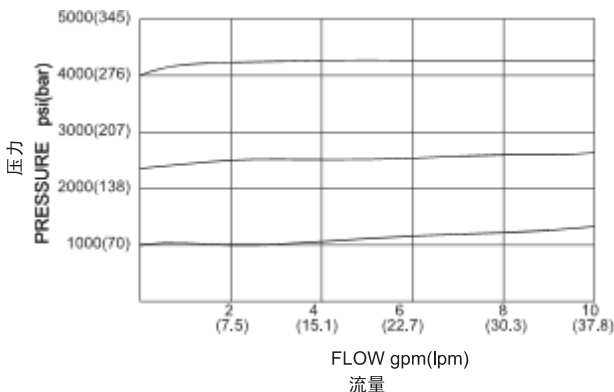
6061-T6, 允许使用最大压力207Bar.

Steel rated at 350Bar.

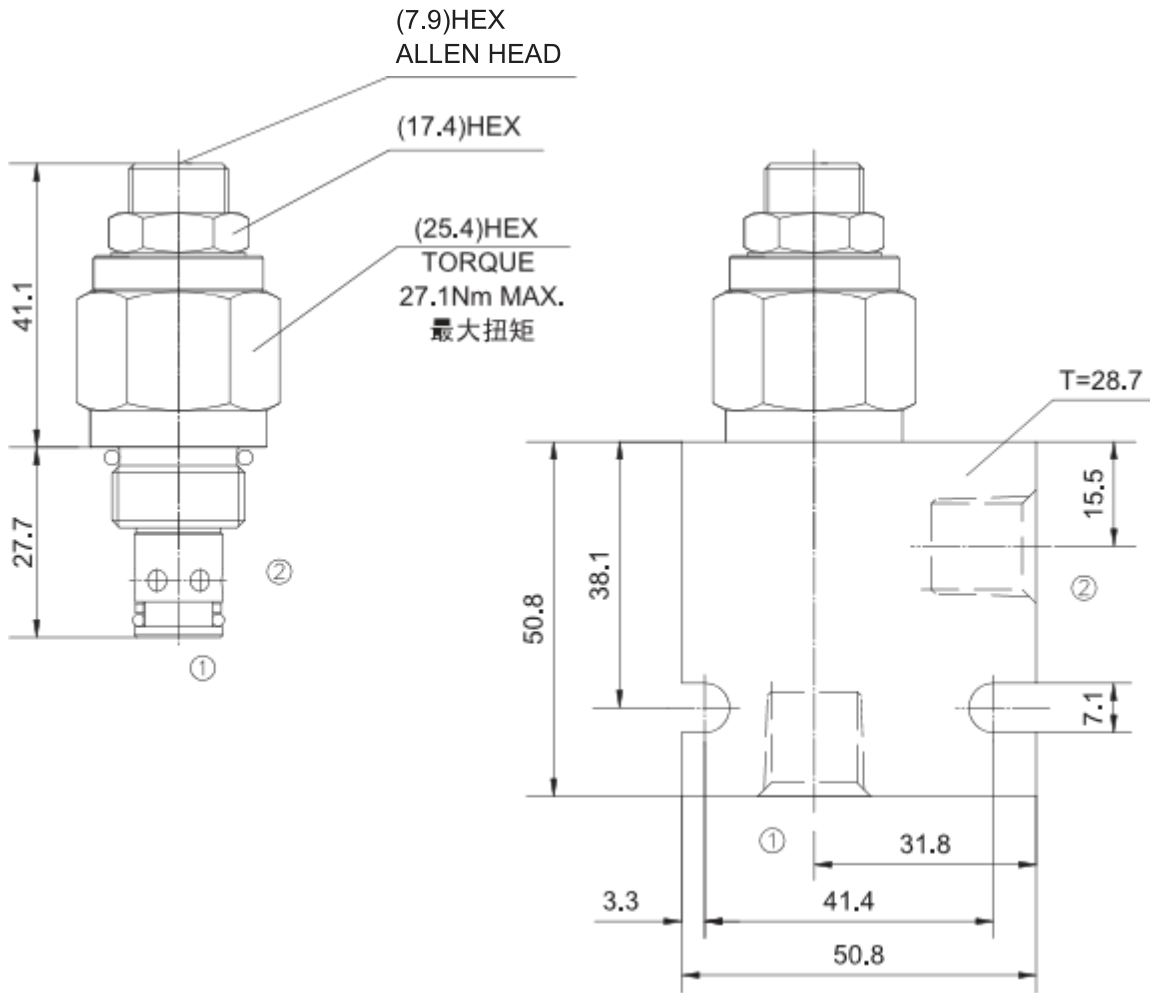
钢材, 允许使用最大压力350Bar.

### PRESSURE DROP VS. FLOW

150 ssu/32 cSt OIL@100°F/38°C



## INSTALLATION DIMENSIONS



Unit=Millimeters

## TO ORDER

LPSRV2 - 08 - \* \* / \* \* \* \* - \* \*

ADJUSTABLE, PILOT OPERATED  
CARTRIDGE RELIEF VALVE  
先导式溢流阀

CAVITY 插孔

Spring Ranges(弹簧调压范围):

15= 50-1500 psi(3.5-103.5bar) Preset:450psi(31bar)  
 30= 50-3000 psi(3.5-207bar) Preset:950psi(65.5bar)  
 50= 50-5000 psi(3.5-350bar) Preset:1500psi(103bar)

BODY PORTING 阀块油口

3N = 3/8 PTF

4T = SAE 4

6T = SAE 6

Other porting is available.

其他螺纹油口是可选择的。

(Omit for Cartridge only 省略为不带)

SETTING IN BAR 设定压力(BAR)

EXAMPLE:0200=200BAR

(Omit for standard

省略则为标准设定)