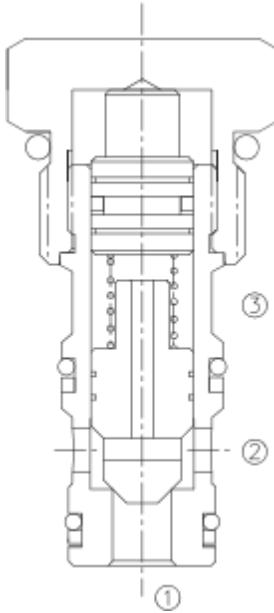


# LPC2-10

## 液控单向阀

### Pilot To Close, Poppet-Type Cartridge Check Valve



#### OPERATION

Pressure at ① overcomes the spring-bias poppet and allows free flow to ②. Flow in the opposite direction, from ② to ①, is blocked by the poppet. When the required pilot pressure is achieved at ③, the poppet is held closed to block flow between ① and ②. The pilot piston area to poppet seat area ratio is 3 to 1.

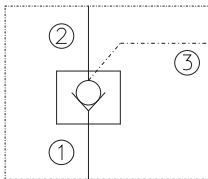
当在①口的压力超过开启压力，①到②开启；在反方向，②到①关闭；当液控口③压力达到一定时，锥阀芯关闭，①和②不通，液控活塞的截面积与锥阀座的面积比为3:1。

#### FEATURES

##### 特性

- Hardened poppet and seat for long life. 长寿命的阀。
- Industry common cavity. 工业通用插孔。
- Compact size. 紧凑的结构。

#### SYMBOL



#### SPECIFICATIONS

##### 技术参数

**Operating Pressure (工作压力):** 250 Bar

**Flow (流量):** See PRESSURE DROP VS. FLOW graph.

**Internal Leakage (内泄漏):** 2 drops/min. max. at 250 Bar

**Crack Pressures(开启压力):**

2.1=2.1Bar

3.4=3.4Bar

6.2=6.2Bar

**Pilot Ratio (控制比):** 3 : 1

**Temperature(温度):** -22°F to +250°F (-30°C to +120°C)

**Recommended Filtration:** Critical Application – ISO 16/12

(推荐的过滤网) Non-Critical Application – ISO 19/15

**Fluids(流体):** Mineral-based fluids.

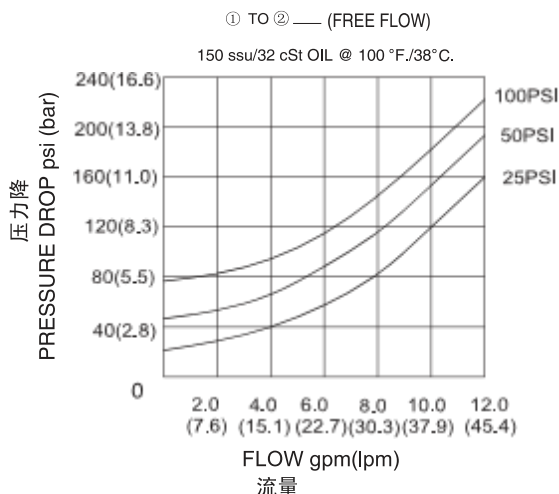
For other fluid compatibility, consult factory.

**Cavity (插孔):** 10-3, see page 363

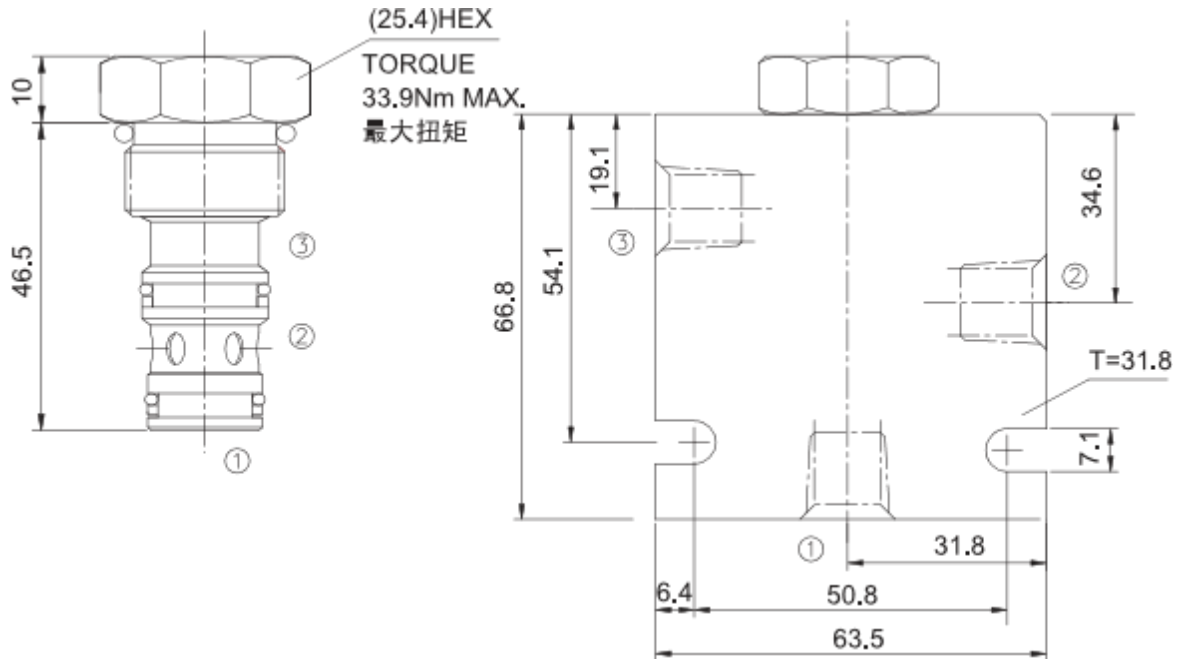
**Body Material (阀块材料):** Anodized 6061T6 aluminum alloy rated at 207 Bar.

6061-T6铝，允许使用最大压力207Bar.

#### PRESSURE DROP VS. FLOW



## INSTALLATION DIMENSIONS



Unit=Millimeters

## TO ORDER

