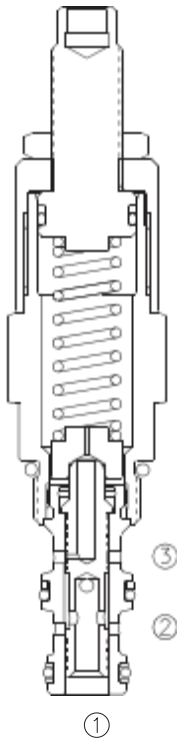


LDPR-08

直动式减压/溢流阀

Direct-acting, Pressure Reducing/Relieving Valve



OPERATION

In its steady state, the valve allows flow to pass bi-directionally from ② to ①, with the spring chamber constantly drained at ③. On attainment of a pre-determined pressure at ①, the cartridge shifts to restrict input flow at ②, thereby regulating pressure at ①. In this mode, the valve will also relieve ① to ③ at approximately 10 bar over the reducing setting.

在①口的压力低于溢流设定的压力时，从②到①减压。弹簧腔内泄漏在③口。

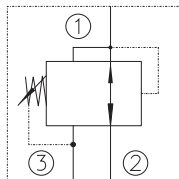
当①口压力超过预设定的压力10Bar以上时，②口渐渐关闭，①到③开始溢流。

FEATURES

特性

- Adjustments prohibit springs from going solid. 调节时，弹簧不会被压并。
- Optional spring ranges to 152 bar. 弹簧选择范围可达到152 bar。
- Hardened spool and cage for long life. 长寿命的阀。
- Industry common cavity. 工业通用插孔。

SYMBOL



SPECIFICATIONS

技术参数

Operating Pressure (工作压力): 207 bar

Flow (流量): See Performance Chart

Internal Leakage ② to ③ (内泄漏②到③):

82 cc/minute max. at ΔP 207 bar

Standard Spring Ranges (弹簧调压范围):

3.4 to 20.7 bar; Preset: 10.3 bar

6.9 to 41.4 bar; Preset: 20.7 bar

20.7 to 82.8 bar; Preset: 41.4 bar

34.5 to 152 bar; Preset: 76 bar

Temperature (温度): -22°F to +250°F (-30°C to +120°C)

Filtration (过滤网): Critical Application-ISO 16/12.

Non-Critical Application-ISO 19/15

Fluids (流体): Mineral-based fluids.

For other fluid compatibility consult factory.

Cavity (插孔): 08-3; See page 362

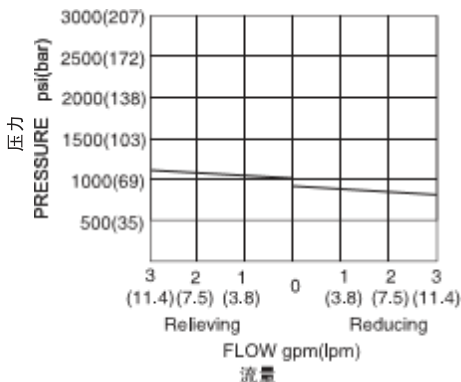
Body Material (阀块材料): Anodized 6061T6 aluminum alloy rated at 207 Bar.

6061-T6, 允许使用最大压力207Bar.

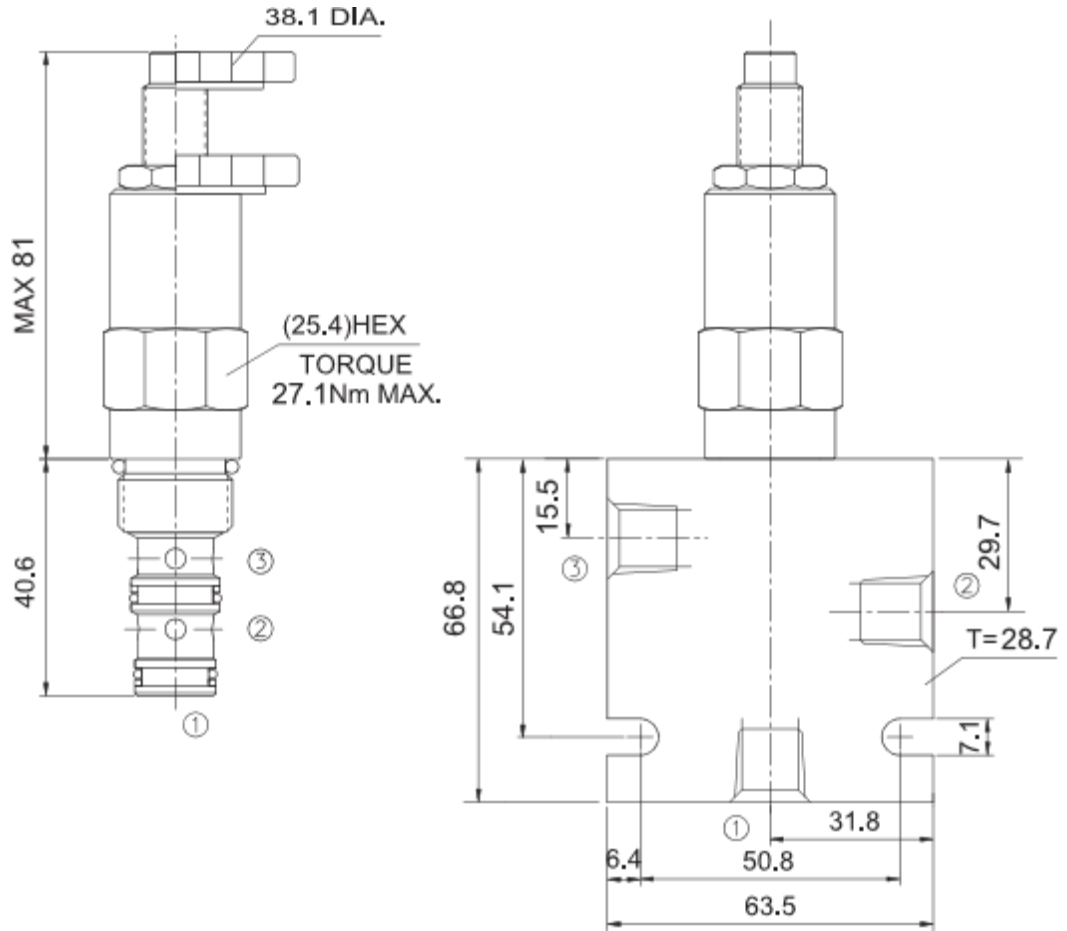
PERFORMANCE CHART

150 ssu/32 cSt OIL @ 100°F / 38°C

Nominal 69 bar Setting



INSTALLATION DIMENSIONS



Unit=Millimeters

TO ORDER

LDPR - 08 - ** - * /***** - **

DIRECT-ACTING, PRESSURE
REDUCING/ RELIEVING VALVE
直动式减压/溢流阀

CAVITY 插孔

Spring Range 弹簧调压范围

3= 50 to 300 psi (3.4 to 20.7 bar),Preset:10.3 bar;
6=100 to 600 psi (6.9 to 41.4 bar),Preset:20.7 bar;
12=300 to 1200 psi (20.7 to 82.8 bar),Preset:41.4 bar;
22=500 to 2200 psi(34.5 to 152 bar),Preset: 76 bar;

BODY PORTING 阀块油口
3N=3/8PTF
4T=SAE4
6T=SAE6
Other Porting is Available
其它螺纹油口也是可能的
(Omit for Cartridge only
省略为不带阀块)

SETTING IN BAR 设定压力 (BAR)
EXAMPLE: 0100=100BAR

K 1-1/2' Dia. Knob
调节手轮
(Omit for 1/4' Hex Allen head)
内六角调节杆