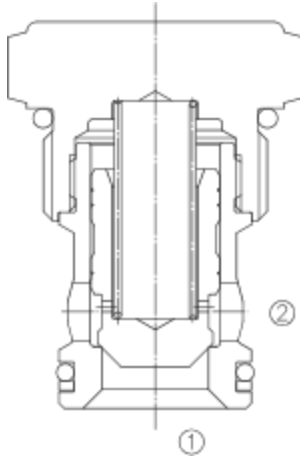


# LCV-16-P

## 单向阀 锥阀型

### Direct-Acting, Poppet-Type Cartridge Check Valve



#### OPERATION

Pressure at ① overcomes the spring-bias poppet and allows free flow ① to ② . Flow in the opposite direction, from ② to ① , is blocked by the poppet.

当在 ①口的压力超过开启压力，①到②开启；在反方向，②到①关闭；

#### FEATURES

##### 特性

- Hardened poppet and seat for long life. 长寿命的阀。
- Low leakage . 低泄漏。
- Industry common cavity. 工业通用插孔。
- Compact size. 紧凑的结构。

#### SPECIFICATIONS

##### 技术参数

**Operating Pressure** (工作压力) : 350 Bar

**Flow** (流量) : See PRESSURE DROP VS. FLOW graph.

**Internal Leakage** (内泄漏) : 5 drops/min. max. at 350 Bar

**Crack Pressures** (开启压力):

- 0.34=0.34Bar
- 1.7= 1.7Bar
- 4.5= 4.5Bar
- 6.9= 6.9Bar

**Temperature**(温度): -22°F to +250°F (-30°C to +120°C)

**Recommended Filtration:** Critical Application – ISO 16/12

(推荐的过滤网) Non-Critical Application – ISO 19/15

**Fluids**(流体): Mineral-based fluids.

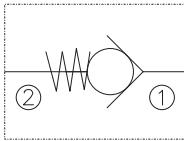
For other fluid compatibility, consult factory.

**Cavity** (插孔) : 16-2, see page 364

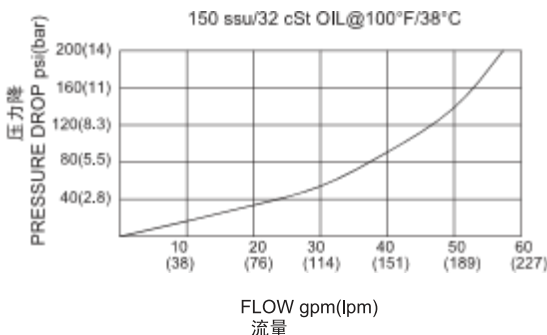
**Body Material** (阀块材料) :

steel rated at 350 Bar.  
钢材, 允许使用最大压力350 Bar。

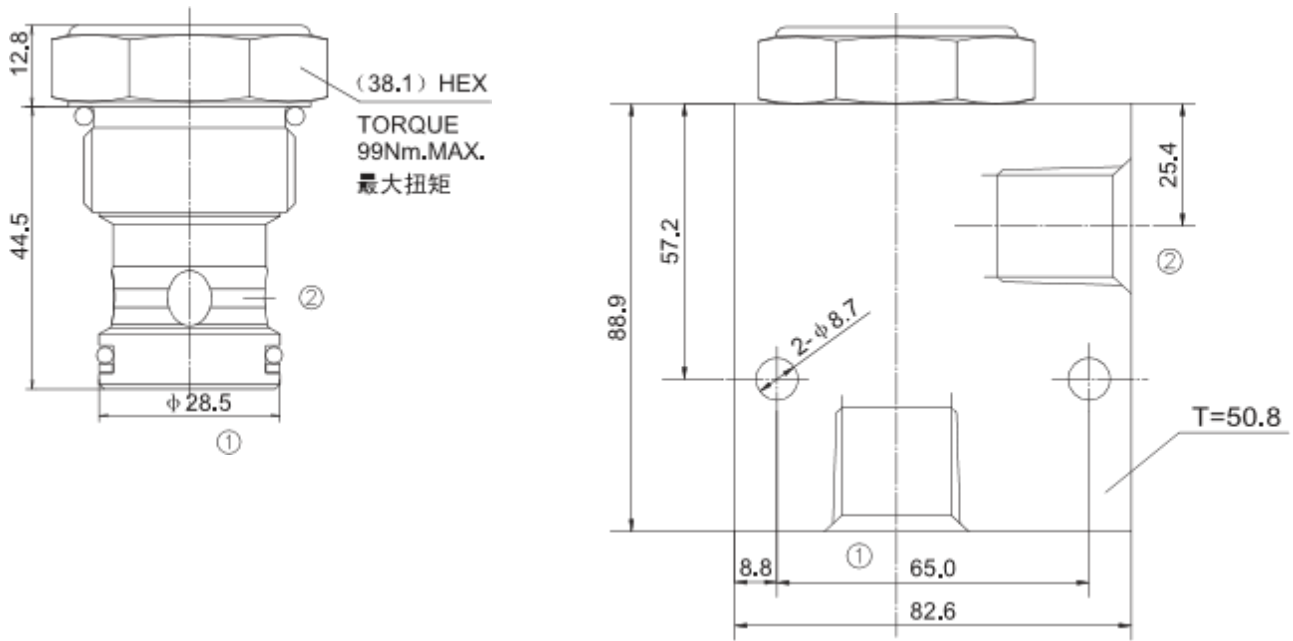
#### SYMBOL



#### PRESSURE DROP VS. FLOW



## INSTALLATION DIMENSIONS



Unit=Millimeters

## TO ORDER

