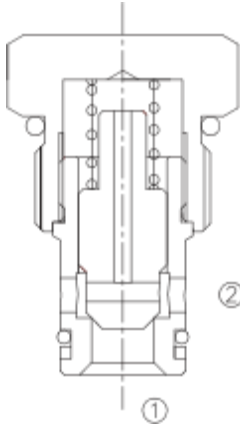


LCV-10-P

单向阀 锥阀型

Direct-Acting, Poppet-Type Cartridge Check Valve



OPERATION

Pressure at ① overcomes the spring-bias poppet and allows free flow ① to ② . Flow in the opposite direction, from ② to ① , is blocked by the poppet.

当在 ①口的压力超过开启压力，①到②开启；在反方向，②到①关闭；

FEATURES

特性

- Hardened poppet and seat for long life. 长寿命的阀。
- Low leakage . 低泄漏。
- Industry common cavity. 工业通用插孔。
- Compact size. 紧凑的结构。

SPECIFICATIONS

技术参数

Operating Pressure (工作压力) : 250Bar

Flow (流量) : See PRESSURE DROP VS. FLOW graph.

Internal Leakage (内泄漏) : 2 drops/min. max. at 250 Bar

Crack Pressures (开启压力):

- 0.3=0.3Bar
- 0.7=0.7Bar
- 2.1=2.1Bar
- 4.5=4.5Bar
- 6.9=6.9Bar

Temperature(温度) : -22°F to +250°F (-30°C to +120°C)

Recommended Filtration: Critical Application – ISO 16/12

(推荐的过滤网) Non-Critical Application – ISO 19/15

Fluids(流体): Mineral-based fluids.

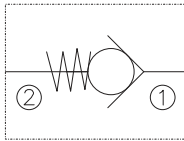
For other fluid compatibility, consult factory.

Cavity (插孔) : 10-2, see page 363

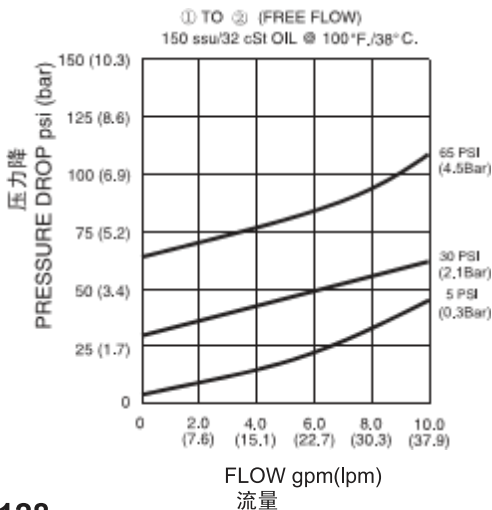
Body Material (阀块材料) : Anodized 6061T6 aluminum alloy rated at 207 Bar.

6061-T6铝，允许使用最大压力207Bar.

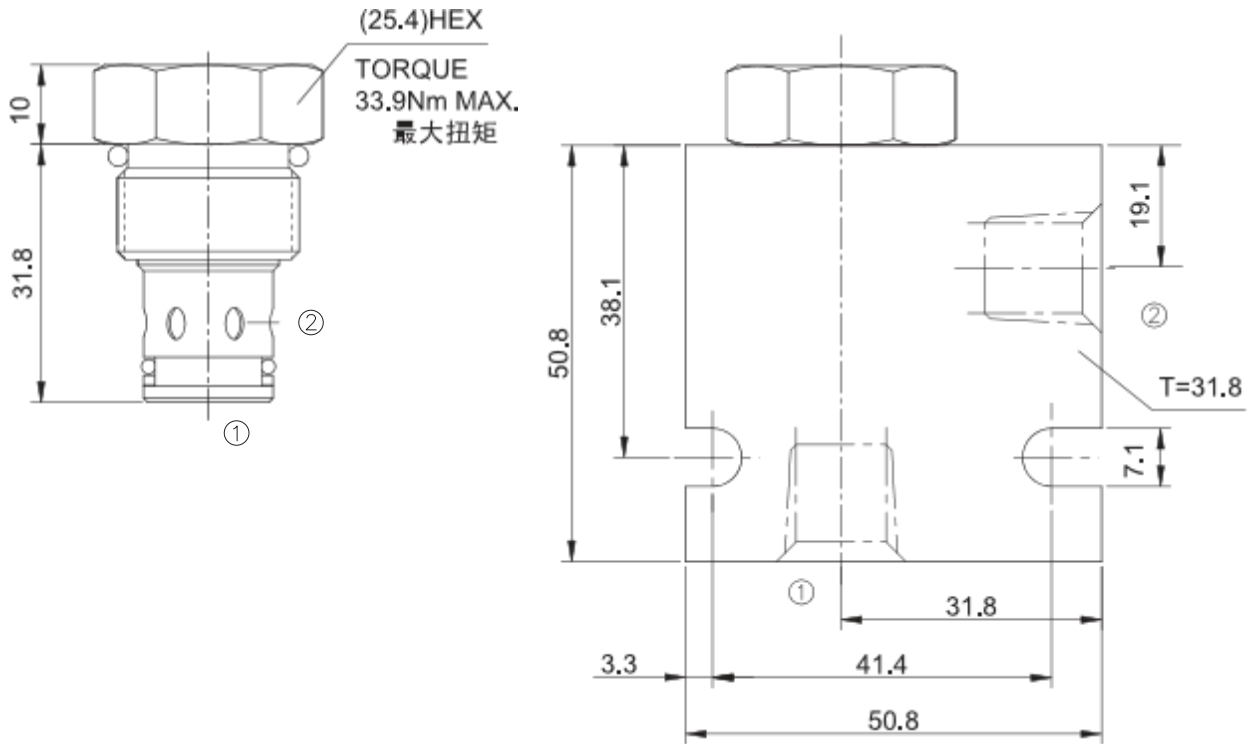
SYMBOL



PRESSURE DROP VS. FLOW



INSTALLATION DIMENSIONS



Unit=Millimeters

TO ORDER

