

# LCBEG/LCBEH

## 平衡阀

标准型 /standard

### 说明 DESCRIPTION

A cartridge-style standard capacity counterbalance valve

平衡阀

### 工作 OPERATION

Counterbalance valves with pilot assist are meant for control on overrunning load. The check valve allows free flow from port ② to port ① while a direct-acting, pilot-assisted relief valve controls flow from port ① to port ② . Pilot assist at port ③ lowers the effective setting of the relief valve at a rate determined by the pilot ratio.

带先导开启平衡阀用于控制超越负载工况。油液从②口到①口单向自由流动；油液经直动，先导辅助从①口溢流到②口，③口是溢流辅助控制口，按控制比降低溢流功能的有效设定值。

### 特性 FEATURES

• Counterbalance valves should be set at least 1.3 times the maximum load induced pressure.

最大设定压力至少为最大负载压力的 1.3 倍。

• Backpressure at port ② adds to the effective relief setting at a ratio of 1 plus the pilot ratio times the backpressure.

②口的背压按“控制比 +1”的倍数加到溢流阀的设定值上即增加值  $= (1 + \text{控制比}) \times \text{压力值}$ 。

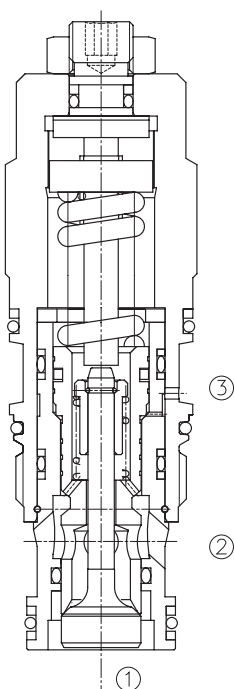
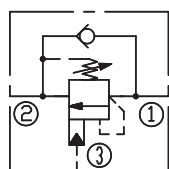
• Reseat exceeds 85% of set pressure when the valve is standard set. Setting lower than the standard set pressure may result in lower reseal percentages.

标准设定时，闭合压力值大于设定压力值的 85%；低于标准设定，则闭合压力值的百分比相应降低。

• Factory pressure setting established at 30cc/min(2 in<sup>3</sup>/min).

工厂的设定是指当溢流阀开启（流量为 30cc/min）时的压力。

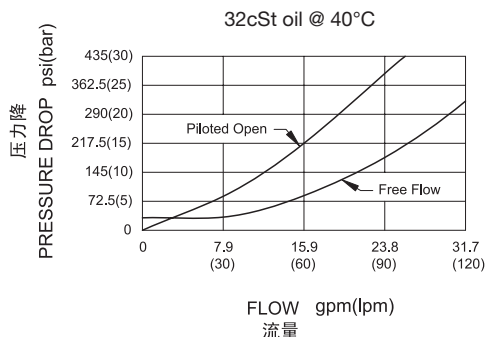
### SYMBOL



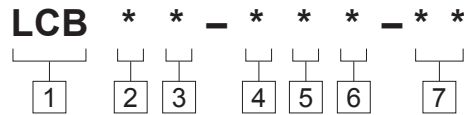
### 技术参数 SPECIFICATIONS

最大设定值(Max. Setting):	350 bar(LCBEG,LCBEH)
最大负载(Max. Recommended Load Pressure at Max. Setting):	270Bar (LCBEG,LCBEH)
流量(Flow):	See PRESSURE DROP VS.FLOW graph.
内泄漏(Internal Leakage):	5 drops/min(滴/分).
控制比(Pilot Ratio):	(LCBEG) 4.5: 1; (LCBEH) 10:1
温度(Temperature):	-40°F to +250°F(-40°C to +120°C)
过滤(Filtration):	See page (参见) N-1
油液(Fluids):	Mineral-based fluids with viscosities of 7.4 to 420 cSt.(矿物油粘度)
插孔(Cavity):	SUN T-2A, See page M-6
阀块材料(Body Material):	6061-T6 aluminum alloy rated to 207bar, Steel & Ductile iron rated to 350bar 6061-T6铝,允许使用最大压力207bar 钢和球铁允许使用最大压力350bar

### 压力 – 流量曲线 PRESSURE DROP VS.FLOW



订货代号 TO ORDER



- 1 功能  
LCB= 平衡阀  
Counterbalance Cartridge Valve

---

- 2 流量 Flow  
E=120L/min

---

- 3 控制比 Pilot Ratio  
G=4.5:1  
H=10:1

---

- 4 控制方式 Control  
L=Standard Screw Adjustment

- 5 弹簧调压范围 Spring Ranges  
J=2000-5000psi(140-350bar)  
Preset:3000psi(210bar)(Check:1.7bar)  
K=1000-2500psi(70-175bar)  
Preset:2000psi(140bar)(Check:1.7bar)  
C=2000-5000psi(140-350bar)  
Preset:3000psi(210bar)(Check:0.3bar)  
D=1000-2500psi(70-175bar)  
Preset:2000psi(140bar)(Check:0.3bar)

---

- 6 油封 Seal Kits  
N= 丁晴橡胶 Buna N  
V= 氟橡胶 Viton

- 7 阀块油口 Body Porting  
空白 Blank= 不带阀块 None  
8T=SAE8  
10T=SAE10  
3G=G 3/8  
4G=G 1/2

※ 阀块详见章节 K-23—K-24  
其它螺纹油口也是可选择的  
Other Porting is Available

G

安装尺寸 INSTALLATION DIMENSIONS

Unit=Millimeters

