

LCBEA

平衡阀

标准型 /standard

说明 DESCRIPTION

A cartridge-style standard capacity counterbalance valve

平衡阀

工作 OPERATION

Counterbalance valves with pilot assist are meant for control on overrunning load. The check valve allows free flow from port ② to port ① while a direct-acting, pilot-assisted relief valve controls flow from port ① to port ②. Pilot assist at port ③ lowers the effective setting of the relief valve at a rate determined by the pilot ratio.

带先导开启平衡阀用于控制超越负载工况。油液从②口到①口单向自由流动；油液经直动，先导辅助从①口溢流到②口，③口是溢流辅助控制口，按控制比降低溢流功能的有效设定值。

特性 FEATURES

- Counterbalance valves should be set at least 1.3 times the maximum load induced pressure.

最大设定压力至少为最大负载压力的 1.3 倍。

- Backpressure at port ② adds to the effective relief setting at a ratio of 1 plus the pilot ratio times the backpressure.

②口的背压按“控制比 +1”的倍数加到溢流阀的设定值上即增加值 $= (1 + \text{控制比}) \times \text{压力值}$ 。

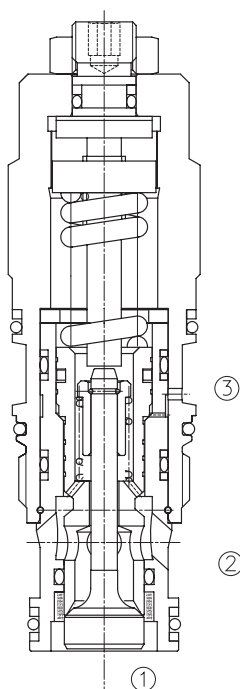
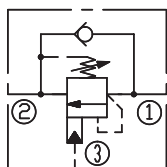
- Reseat exceeds 85% of set pressure when the valve is standard set. Setting lower than the standard set pressure may result in lower reseal percentages.

标准设定时，闭合压力值大于设定压力值的 85%；低于标准设定，则闭合压力值的百分比相应降低。

- Factory pressure setting established at 30cc/min(2 in³/min).

工厂的设定是指当溢流阀开启（流量为 30cc/min）时的压力。

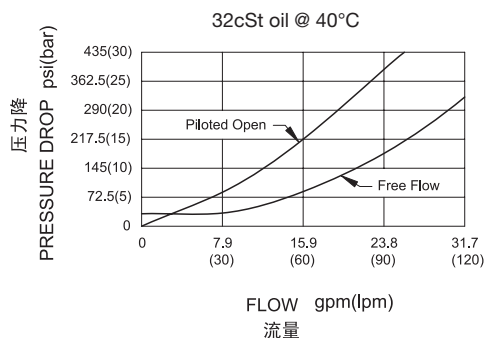
SYMBOL



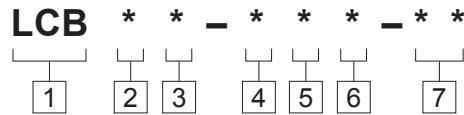
技术参数 SPECIFICATIONS

最大设定值(Max. Setting):	280 bar
最大负载(Max. Recommended Load Pressure at Max. Setting):	215bar
流量(Flow):	See PRESSURE DROP VS.FLOW graph.
内泄漏(Internal Leakage):	5 drops/min(滴/分).
控制比(Pilot Ratio):	3: 1
温度(Temperature):	-40°F to +250°F(-40°C to +120°C)
过滤(Filtration):	See page (参见) N-1
油液(Fluids):	Mineral-based fluids with viscosities of 7.4 to 420 cSt.(矿物油粘度)
插孔(Cavity):	SUN T-2A, See page M-6
阀块材料(Body Material):	6061-T6 aluminum alloy rated to 207bar, Steel & Ductile iron rated to 350bar 6061-T6铝,允许使用最大压力207bar 钢和球铁允许使用最大压力350bar

压力 - 流量曲线 PRESSURE DROP VS.FLOW



订货代号 TO ORDER



- 1 功能
LCB= 平衡阀
Counterbalance Cartridge Valve

- 2 流量 Flow
E=120L/min

- 3 控制比 Pilot Ratio
A=3:1

- 4 控制方式 Control
L=Standard Screw Adjustment

- 5 弹簧调压范围 Spring Ranges
H=1000-4000psi(70-280bar)
Preset:3000psi(210bar)(Check:1.7bar)
I=400-1500psi(28-105bar)
Preset:1000psi(70bar)(Check:1.7bar)
A=1000-4000psi(70-280bar)
Preset:3000psi(210bar)(Check:0.3bar)
B=400-1500psi(28-105bar)
Preset:1000psi(70bar)(Check:0.3bar)

- 6 油封 Seal Kits
N= 丁晴橡胶 Buna N
V= 氟橡胶 Viton

- 7 阀块油口 Body Porting
空白 Blank= 不带阀块 None
8T=SAE8
10T=SAE10
3G=G 3/8
4G=G 1/2

※ 阀块详见章节 K-23—K-24
其它螺纹油口也是可选择的
Other Porting is Available

G

安装尺寸 INSTALLATION DIMENSIONS

Unit=Millimeters

