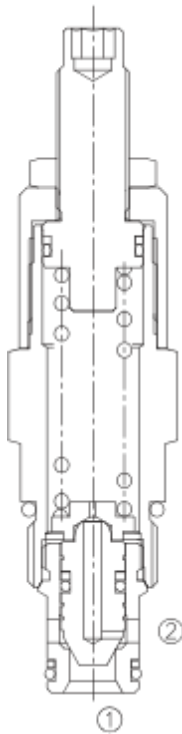


LADRV2-10

直动式溢流阀

Adjustable, Direct-Acting Cartridge Relief Valve



OPERATION

The valve prevents flow from ① to ② until the set crack pressure at ① is achieved. The poppet then unseats allowing flow from ① to ② protecting the circuit from over pressurization.

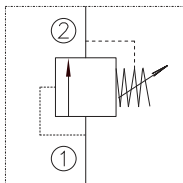
当在①口的压力超过调压弹簧设定的压力时，锥阀芯打开，①到②通，防止系统过压。

FEATURES

特性

- Fast response to pressure surges. 迅速响应压力变化。
- Hardened poppet and seat for long life. 长寿命的阀。
- Adjustment may be locked in place. 调节杆可被锁定住。
- Adjustment prevents spring from going solid. 调节时，弹簧不会被压并。
- Industry common cavity. 工业通用插孔。
- Compact size. 紧凑的结构。

SYMBOL



SPECIFICATIONS

技术参数

Operating Pressure (工作压力) : 207 Bar

Flow (流量) : See PRESSURE DROP VS. FLOW graph.

Internal Leakage(内泄漏): 5 drops/min. MAX.to 80% of nominal setting

Reseat Pressure: Nominal 85% of crack pressure
[crack(set) pressure at 0.95lpm/0.25gpm]

Spring Ranges (弹簧调压范围) :

3 to 41 Bar, Preset: 20 Bar

10 to 80 Bar, Preset: 40 Bar

17 to 161 Bar, Preset: 80 Bar

20 to 210 Bar, Preset: 120 Bar

Temperature(温度) : -22°F to +250°F (-30°C to +120°C)

Recommended Filtration (推荐的过滤网) : ISO 19/15

Fluids(流体) : Mineral-based fluids.

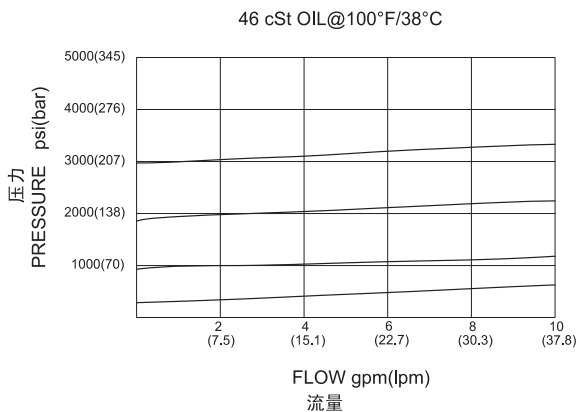
For other fluid compatibility consult factory.

Cavity (插孔) : 10-2, see page 363

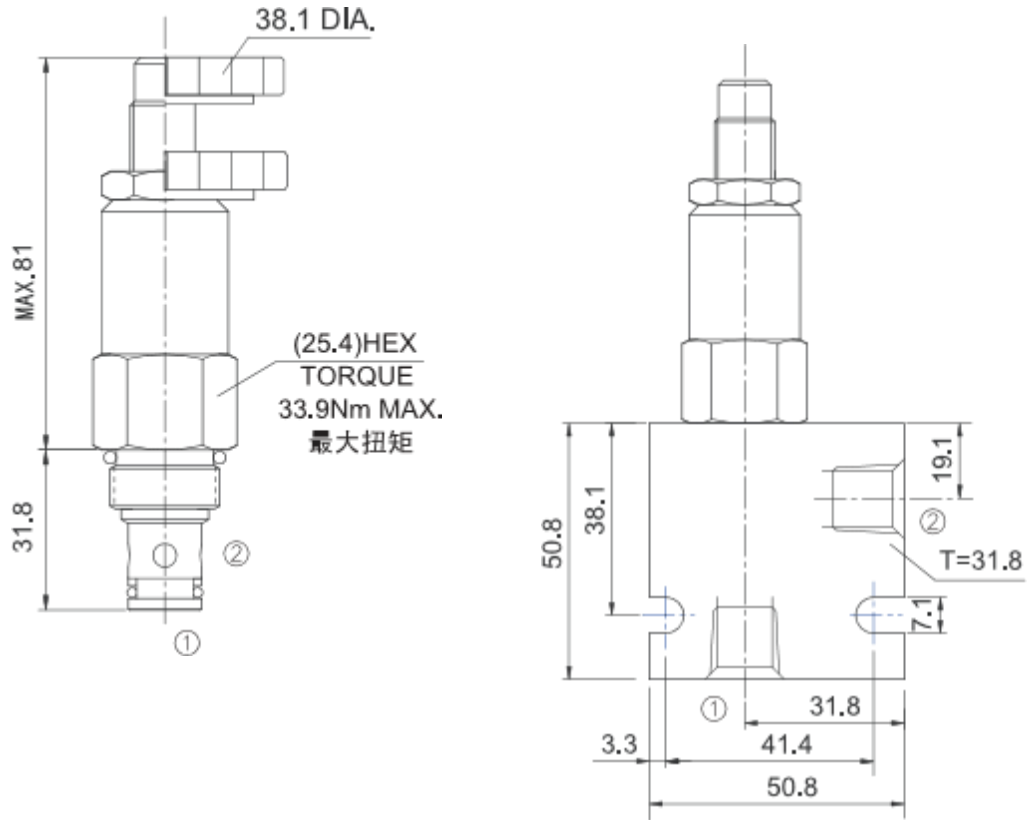
Body Material (阀块材料) : Anodized 6061T6 aluminum alloy rated at 207 Bar.

6061-T6, 允许使用最大压力207Bar.

PRESSURE DROP VS. FLOW



INSTALLATION DIMENSIONS



Unit=Millimeters

TO ORDER

LADRV2 - 10 - * * - * / ***** - * *

ADJUSTABLE, CARTRIDGE
RELIEF VALVE
直动式溢流阀

CAVITY 插孔

Spring Ranges(弹簧调压范围):

6=50-600PSI(3-41BAR) PRESET:290PSI(20BAR)
12=150-1200PSI(10-80BAR) PRESET:580PSI(40BAR)
23=250-2300PSI(17-161BAR) PRESET:1160PSI(80BAR)
30=290-3000PSI(20-210BAR) PRESET:1740PSI(120BAR)

BODY PORTING 阀块油口
3N=3/8PTF
6T=SAE6
8T=SAE8
Other Porting is Available
其它螺纹油口也是可选择的
(Omit for Cartridge only
省略为不带阀块)

SETTING IN BAR 设定压力
EXAMPLE: 0150=150BAR
(OMIT FOR STANDARD)
省略则为标准设定压

K 1-1/2' Dia. Knob
调节手轮
(Omit for 1/4' Hex Allen head)
内六角调节杆